



COPY OF THE ORIGINAL

INSTRUCTION MANUAL

5 AXIS CLAMPING VICE

V5



Code: 10705925 - March 2026

Index

General safety instructions 3

Technical data 4

Usage notes 5

Installation 8

Disassembly 18



INSTRUCTION MANUAL 5 Axis clamping vice

V5

Thank you for purchasing an Original OML product.

This instruction manual contains the installation and maintenance of the IMG vice.

OML reserves the right to make changes without notice.

This instruction manual is a part of the work holding and must be passed to the new owner in case of sale.

This instruction manual may not be in whole or in part-copied without our written agreement.



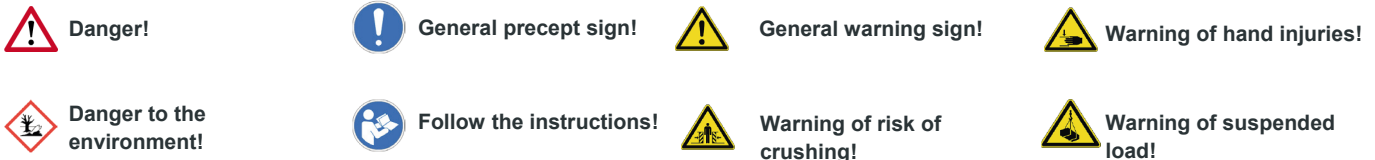
Please read the instruction manual carefully before installation and use and always follow the regulations.

Please note especially the sections which are marked with the following signs:



- Danger of injury or danger to life if instructions are not followed.
- Danger of damage to the work holding, the machine or the components.

General Safety Instructions



-  **1. Correct use**

OML clamping systems work safely and troublefree, if they are used according to their specification i.e. to clamp components on machine tools. Any other use can cause hazards. For any damages resulting herefrom OML is not responsible.
 -  **2. Demands on operators**

This OML product must be installed, operated and maintained only by qualified and regularly trained personnel.
 -  **3. Visual inspection**

Please check the product for visible damage prior to use!
 -  **4. Transport**

Please use suitable lifting gear for product heavier than 16 kg!
 -  **5. Safety Precautions**
 - Maintenance and actuation must be carried out at stopped machine only.
 - Maintenance and set up work must be carried out in safe areas only.
 - During installing, connecting, adjusting, runoff and testing, it must be ensured, that no accidental actuation of the clamping unit can be carried out by the worker or any other persons.
 -  **6. Max. speed**

The clamping unit is intended for stationary use only, and must not be used under rotation!
 -  **7. Danger of injury**
 - Danger of injury because of missing accessories.
 -  • When actuating the clamping system there is increased crushing hazard due to the stroke of the moving components of the clamping system.
 - Never reach for the clamping system while the spindle of machine is rotating.
 - Prior to working at the clamping system, make sure, that the spindle of the machine cannot be started.
 - Work pieces that are clamped with too low clamping pressure, can be ejected!
 - Excessive clamping pressure can cause damage or breakage of the individual components of the clamping system. Work pieces can be released.
 -  **8. Clamping force**

The clamping force of the clamping system can vary, depending on its condition (lubrication and contamination). The clamping forces have to be verified in regular intervals. Use suitable static grip force gauges.
 -  **9. Maintenance**

The stationary clamping system has to be maintained in regular intervals. Check the condition by measuring the grip force with a grip force gauge. Maintenance must be carried out at stopped machine only.

Replace damaged parts with original OML spare parts only.

Maintenance must be carried out at stopped machine only! Insufficient and improper maintenance voids any warranty from OML.
 -  **10. Environment protection**

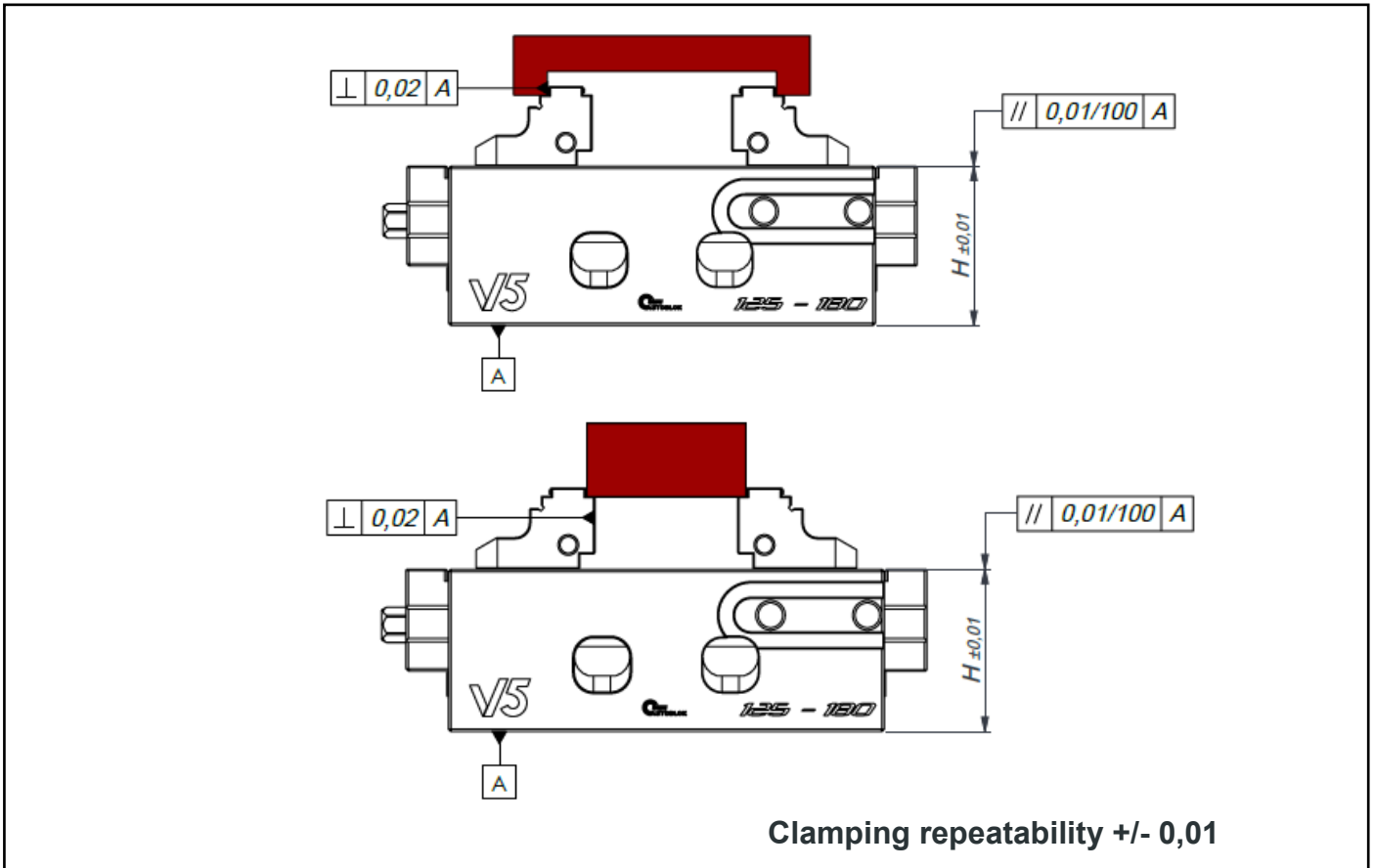
Danger for environment when handling incorrect! Incorrect handling of environment hazardous materials, especially the disposal, may result in environmental damage.

 - Always follow below instructions.
 - In case environmentally hazardous material polluted the environment always take suitable actions immediately. If in doubt, inform the local authority about the pollution.

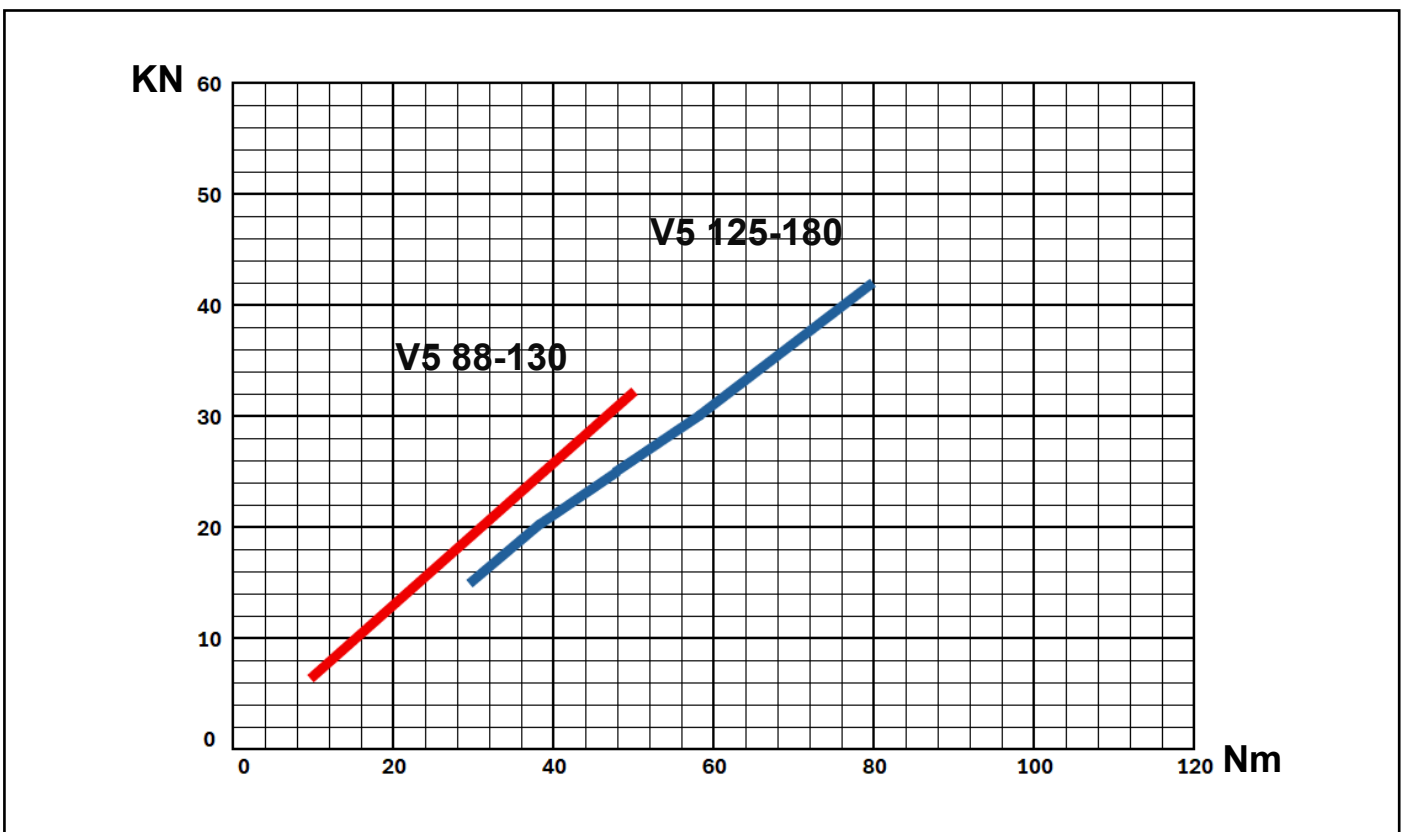
The following hazardous materials are used: Lubricants such as oil and grease can contain poisonous agents. They must not pollute the environment. The disposal must be carried out by a suitable waste management company.

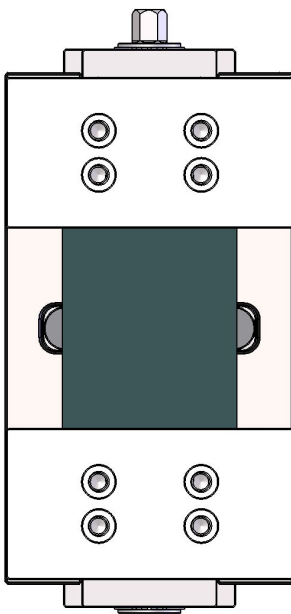
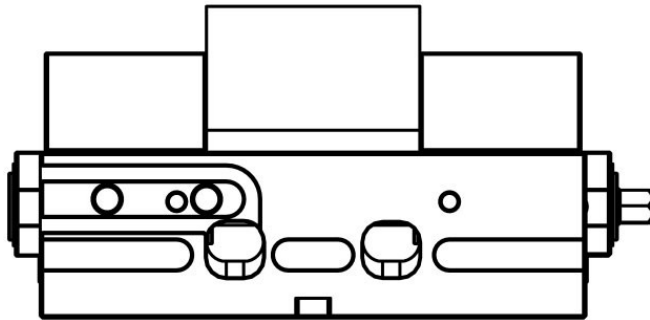
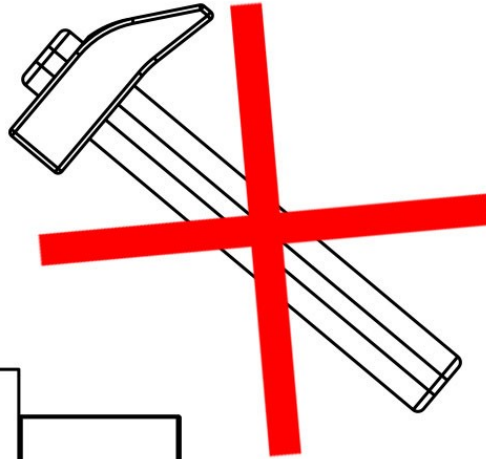
For a proper function of the work holding, use original OML lubricant only.
-  **For any problems or questions please contact OML directly or one of our authorized offices.**
-  **ALL REGULATIONS ACCORDING TO THE PREVIOUS POINTS MUST BE OBSERVED. THE USE ON MACHINE TOOLS HOWEVER, ALWAYS CAUSES SOME RESIDUAL RISKS, THAT HAVE TO BE ELIMINATED BY THE USER BY SUITABLE SAFETY ACTIONS.**

Clamping tolerances

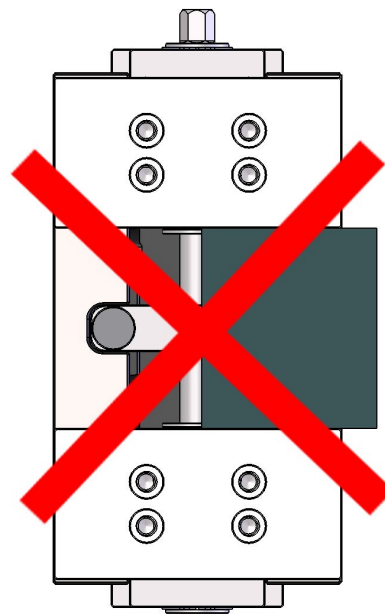


Clamping force





YES



NO

Basic Jaws V5 88 - V5 125

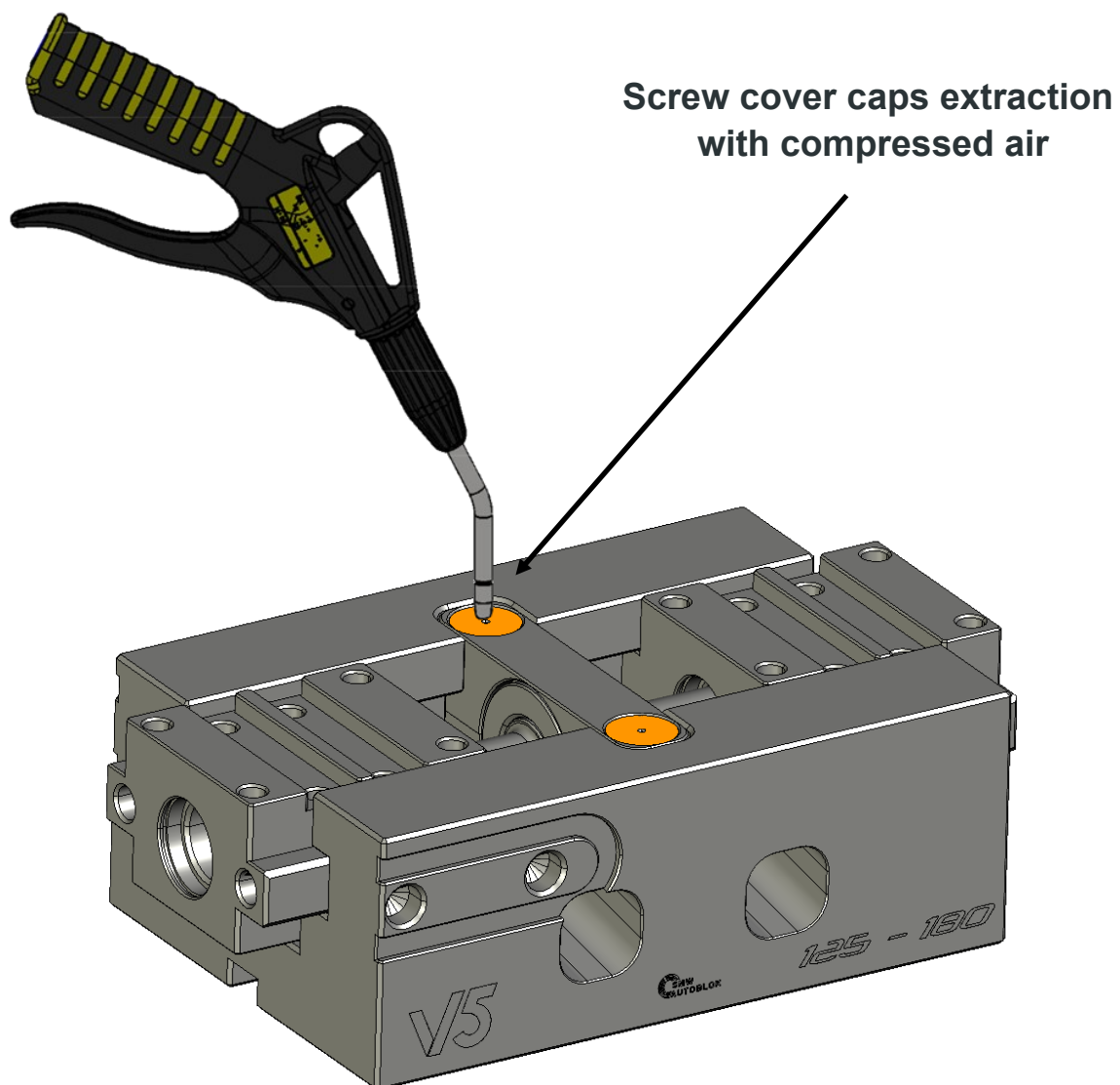
Basic jaws suitable for clamping materials up to 30 HRC



Type	Id. No.
IMG / V5 88	58341259
IMG / V5 125	58351259

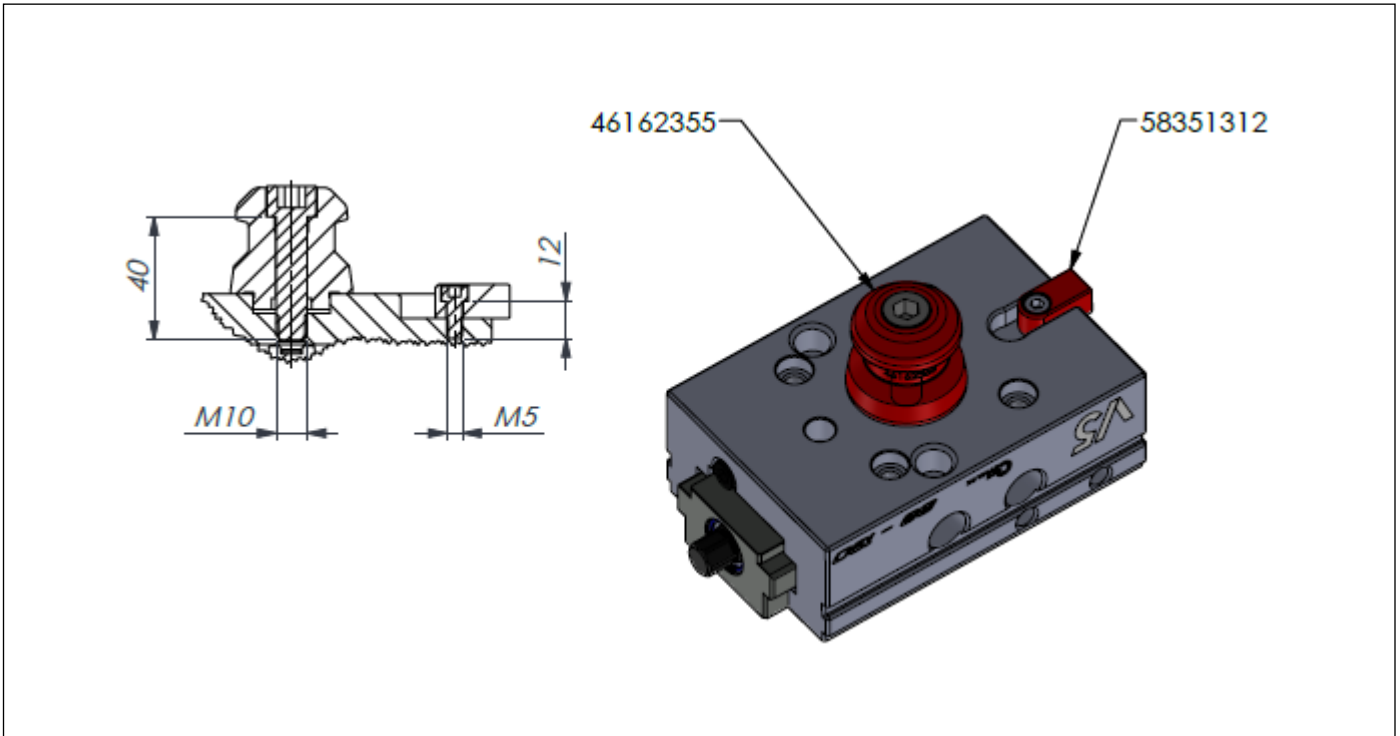


Screw cover caps extraction



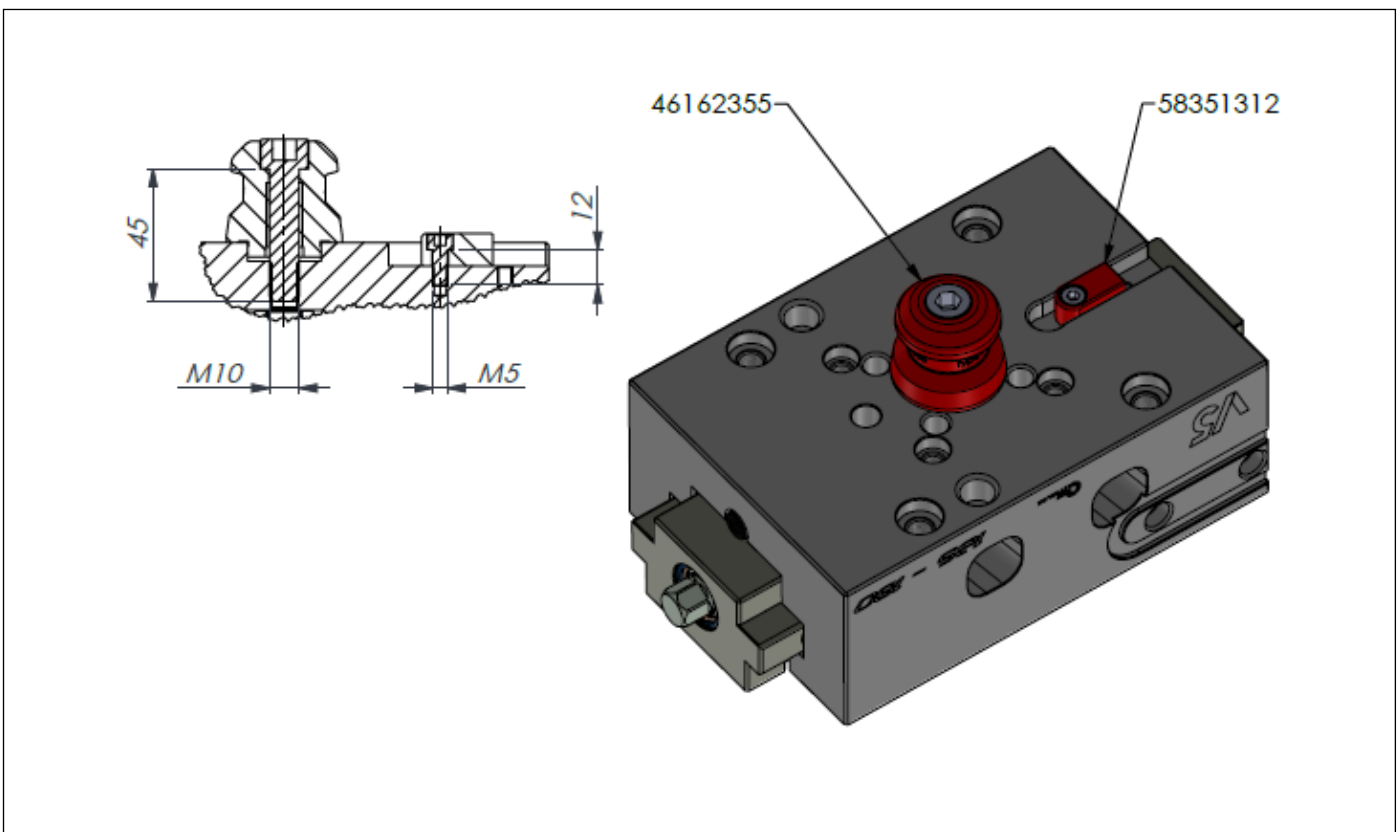
V5 88-130 with APS 140

APS 140 fixing pin kit and key for single use



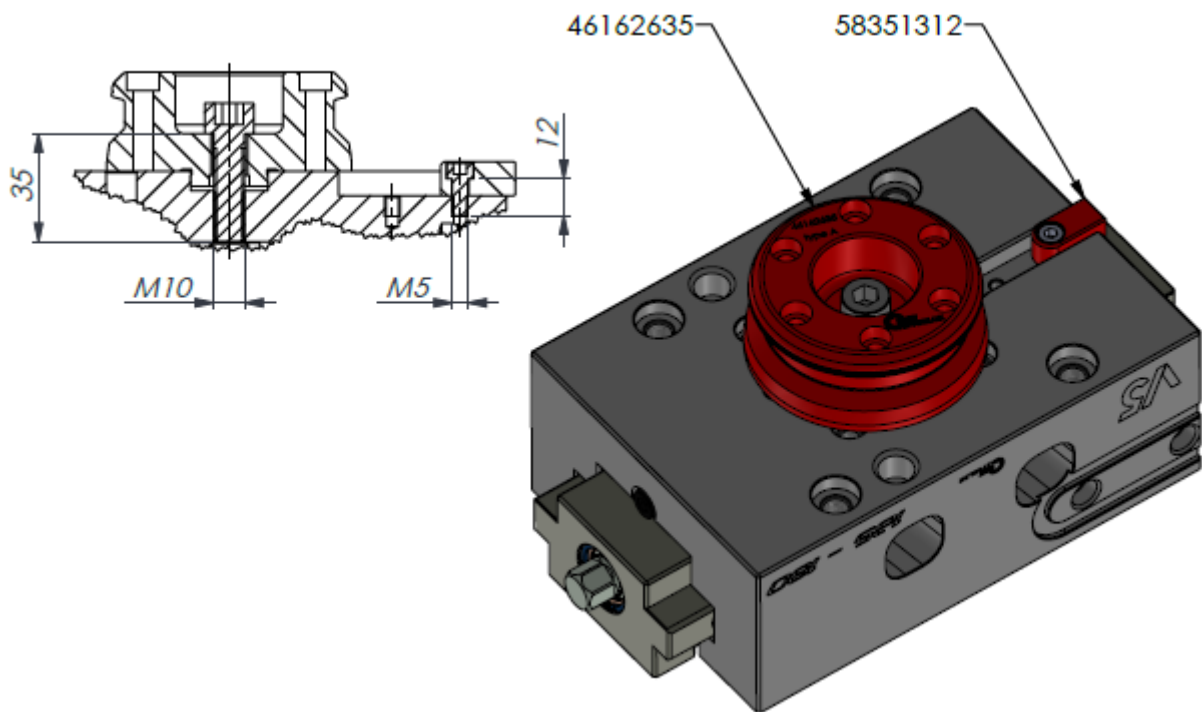
V5 125-180 with APS 140

APS 140 fixing pin kit and key for single use



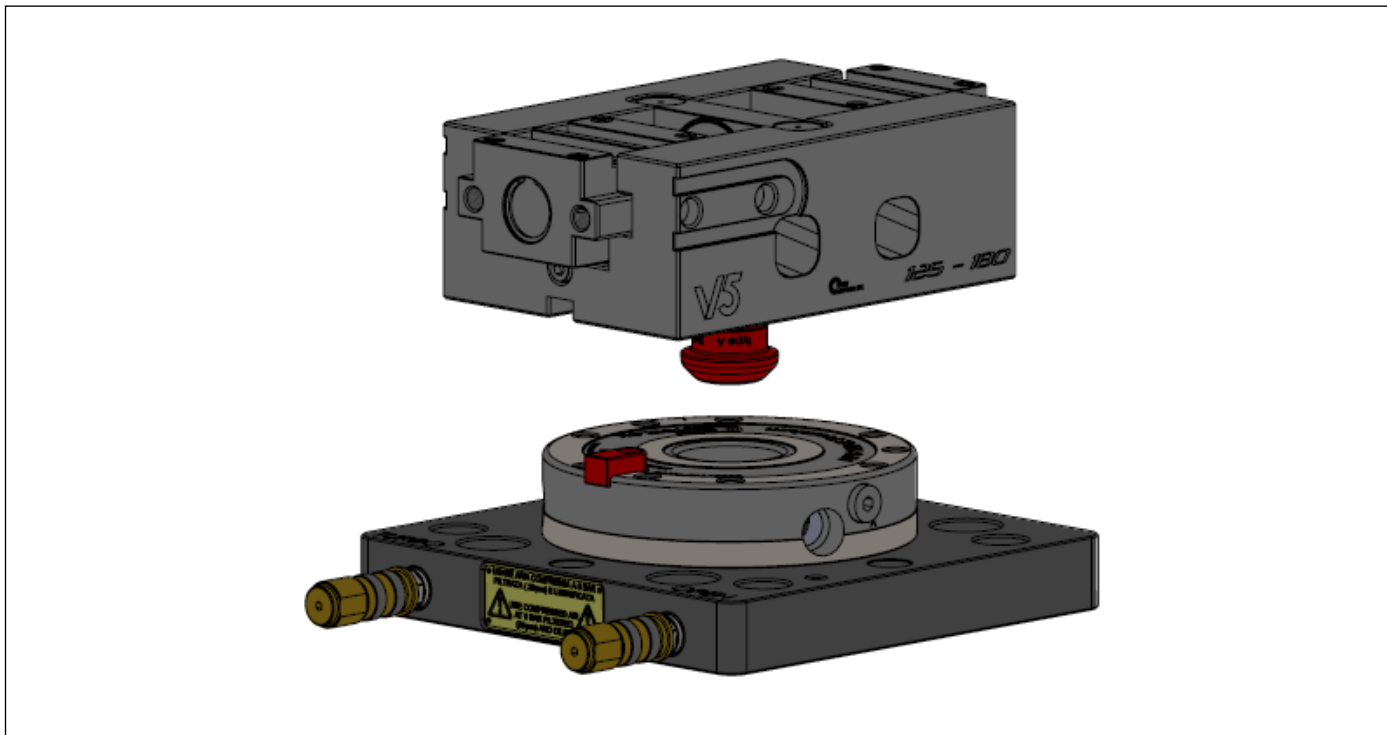
V5 125-180 with APS 190

APS 190 fixing pin kit and key for single use



V5 88-130 - V5 125-180 with APS 140

Application examples



V5 88-130—V5 125-180 with TDM

TDM pin fixing kit and key for single use

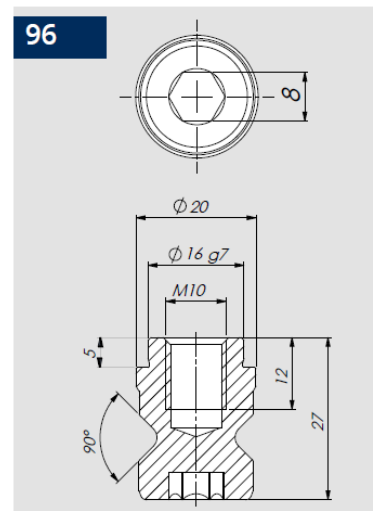
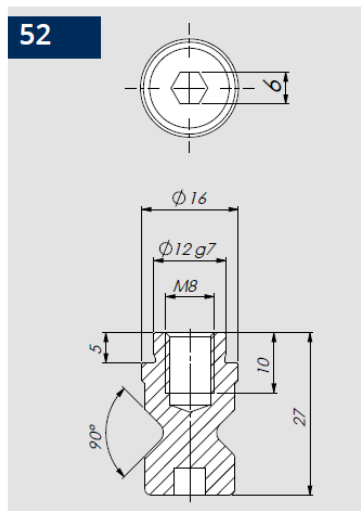
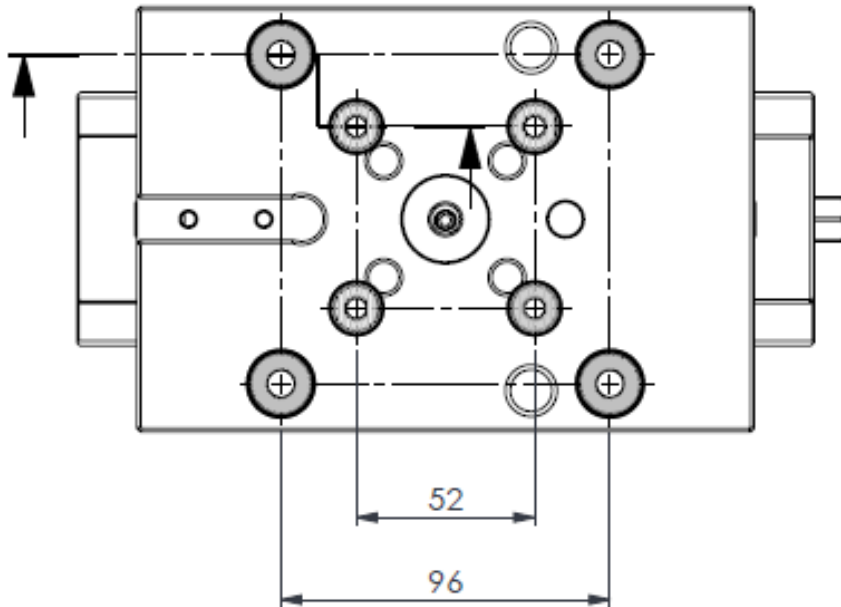
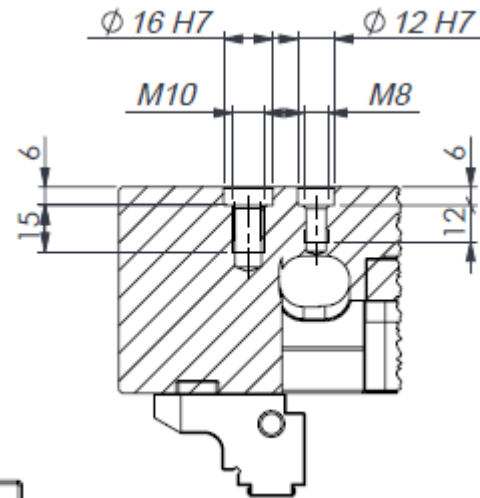


COD. 46230212

COD. 46231125

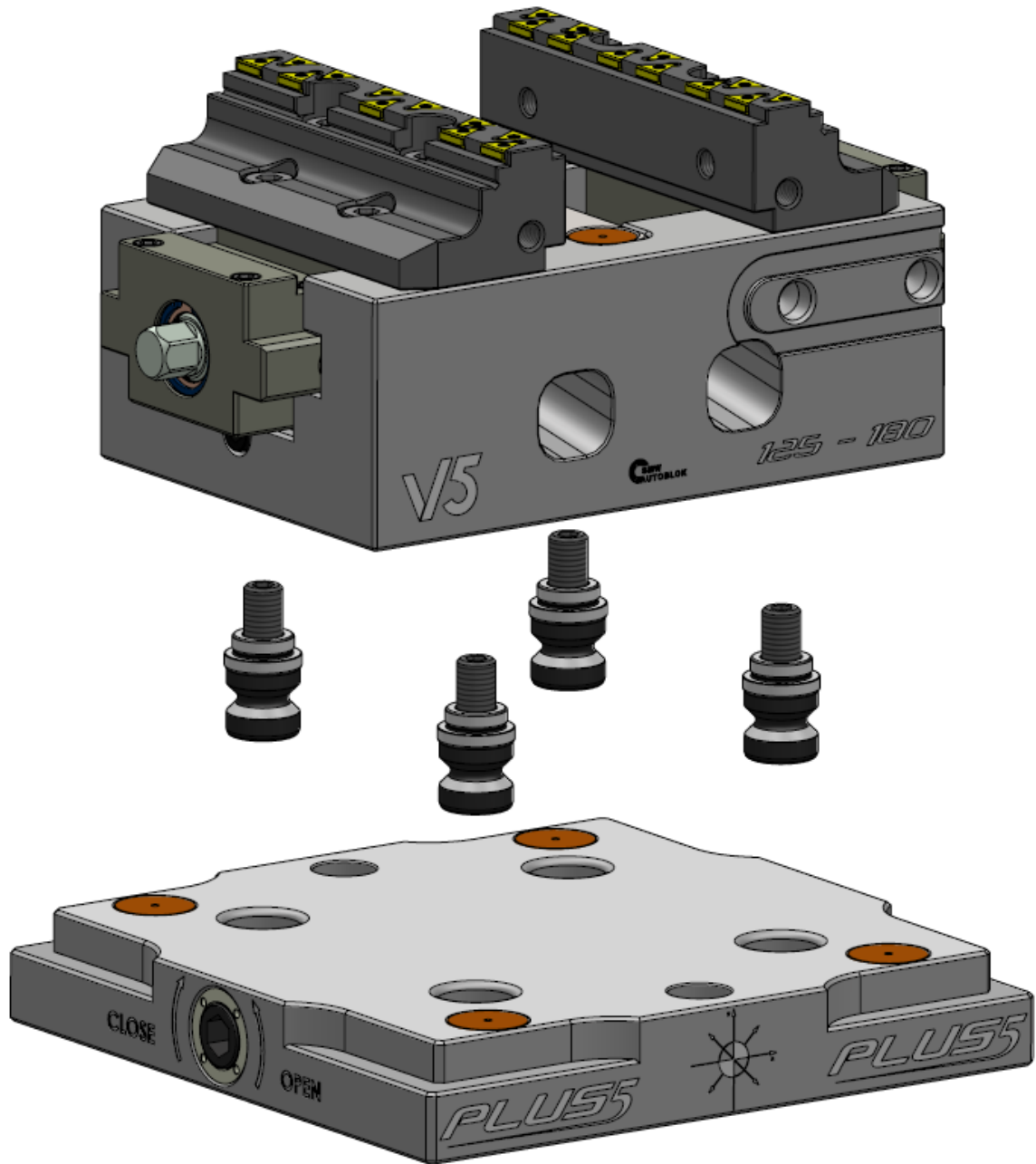
Use on PLUS 5 zero point system

V5 88-130 = PLUS 5, 52 mm (*)
 V5 125-180 = PLUS 5, 52—96 mm (*)

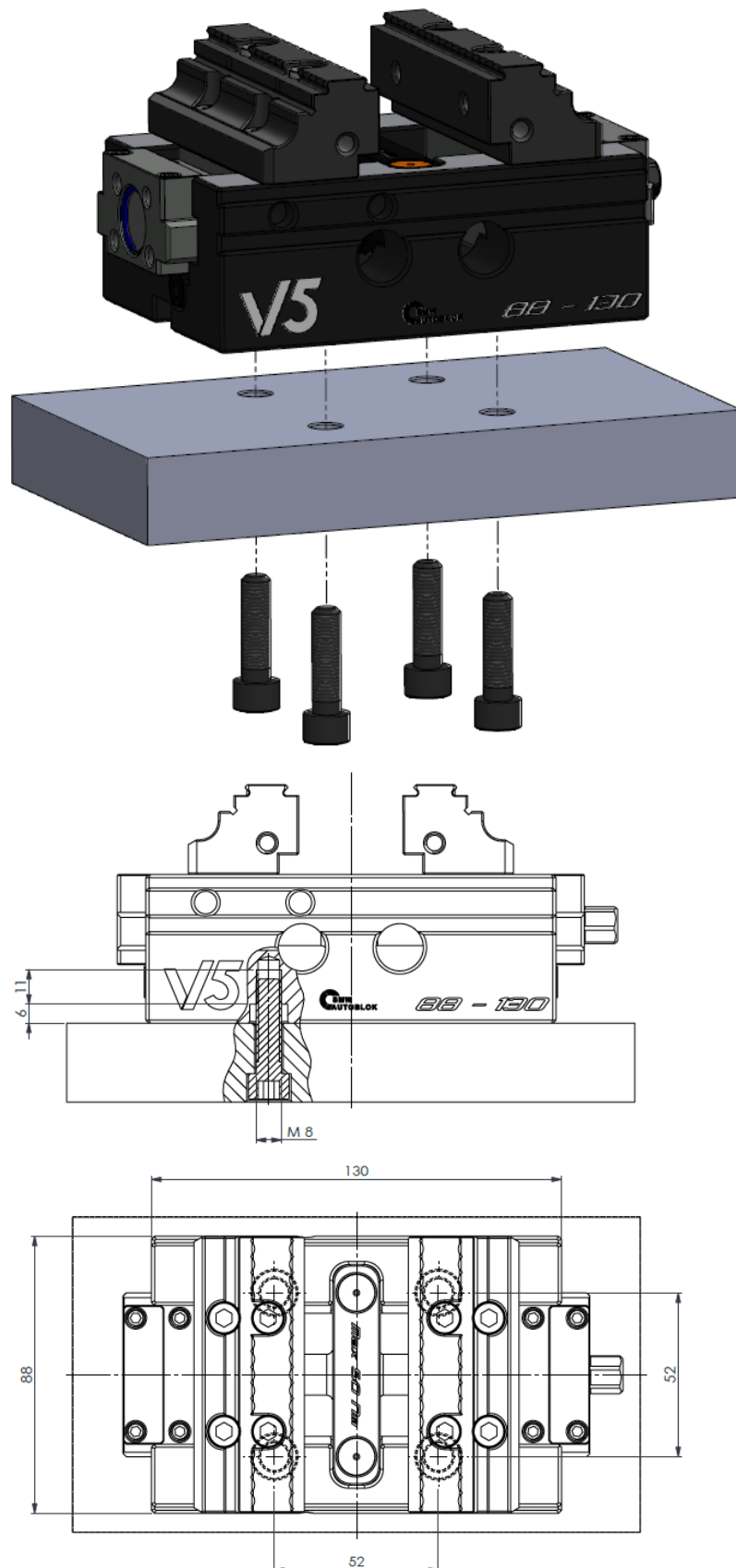


(*) Compatibility with others 52 / 96 systems in the market

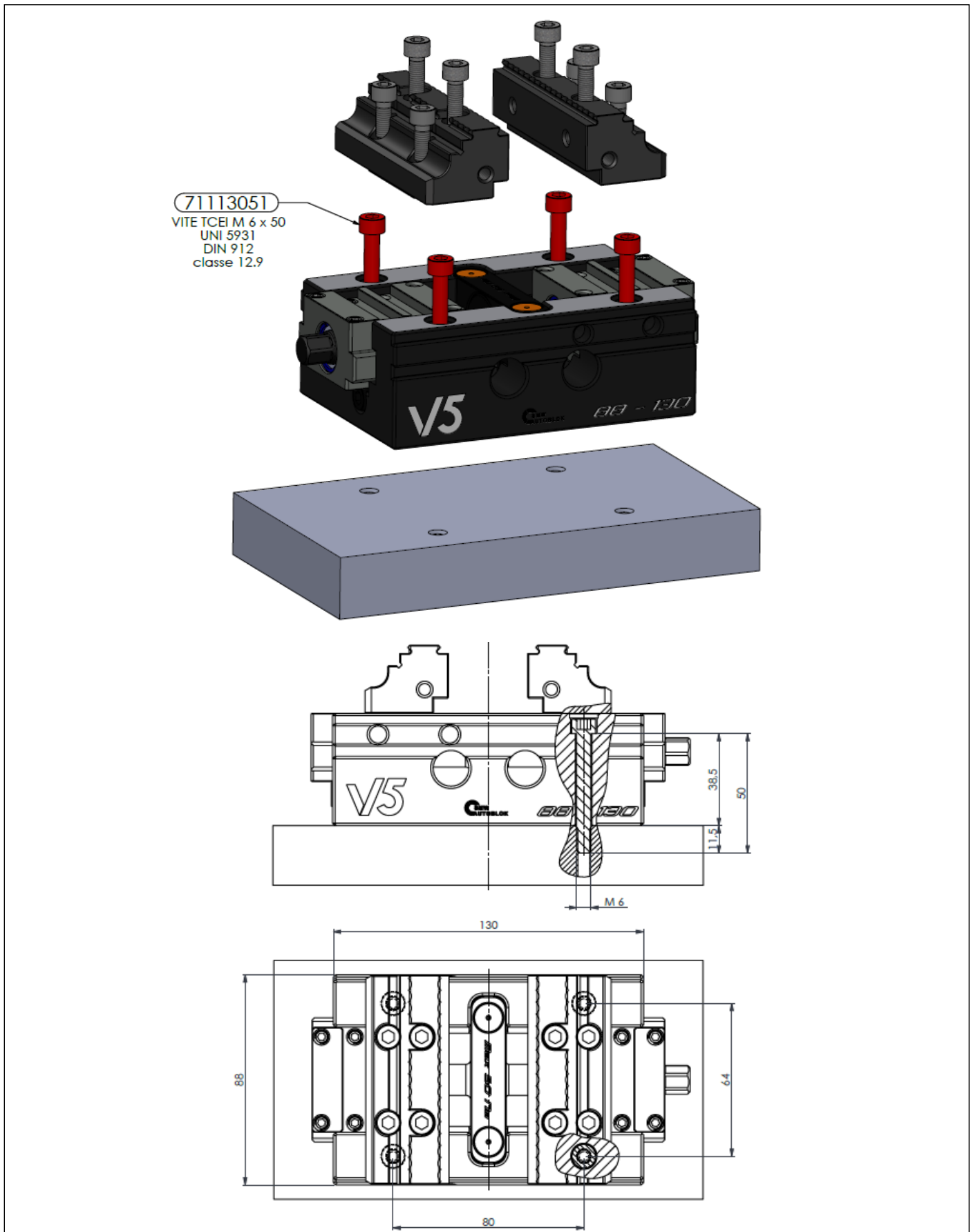
Application examples



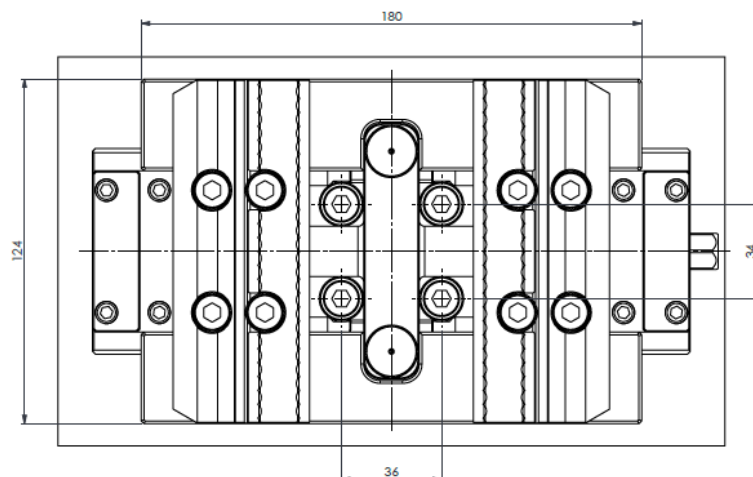
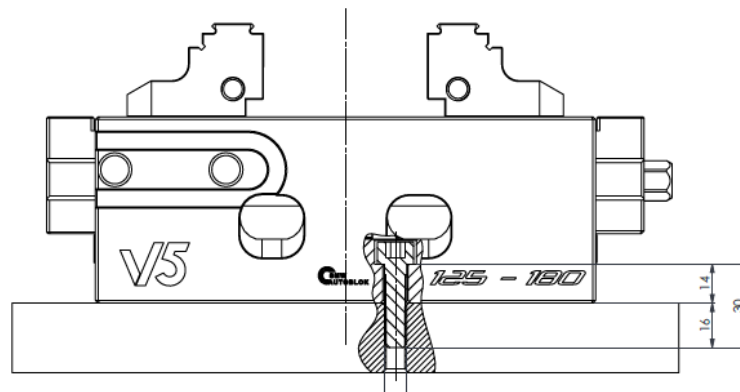
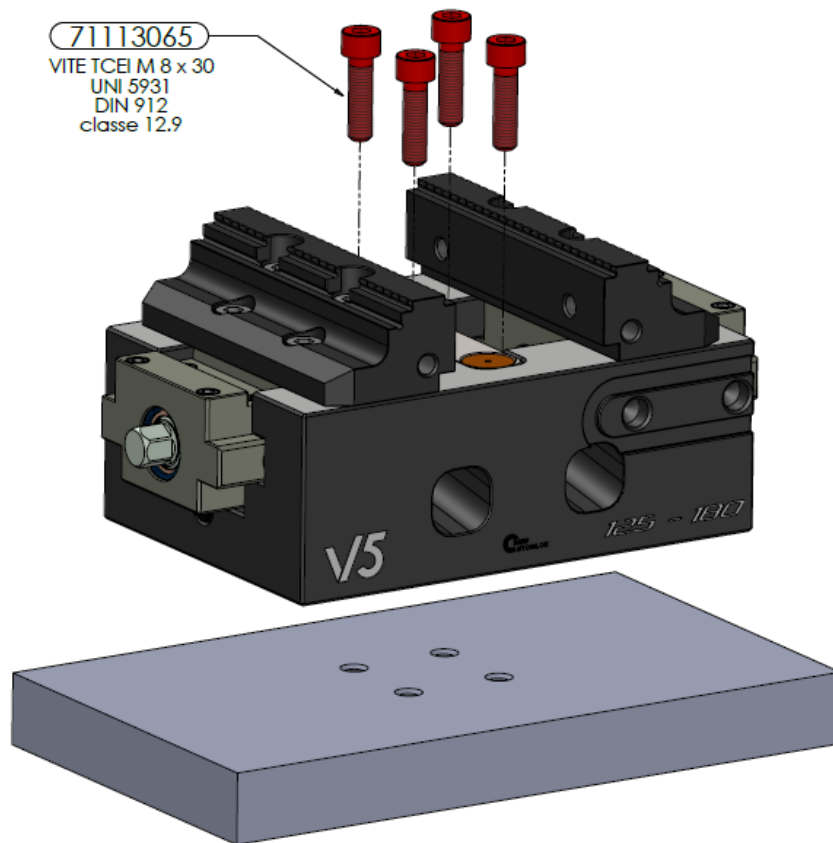
Assembly diagram V5 88-130 (For vices delivered by 2025)



Assembly diagram V5 88-130 (For vices delivered from 2026)

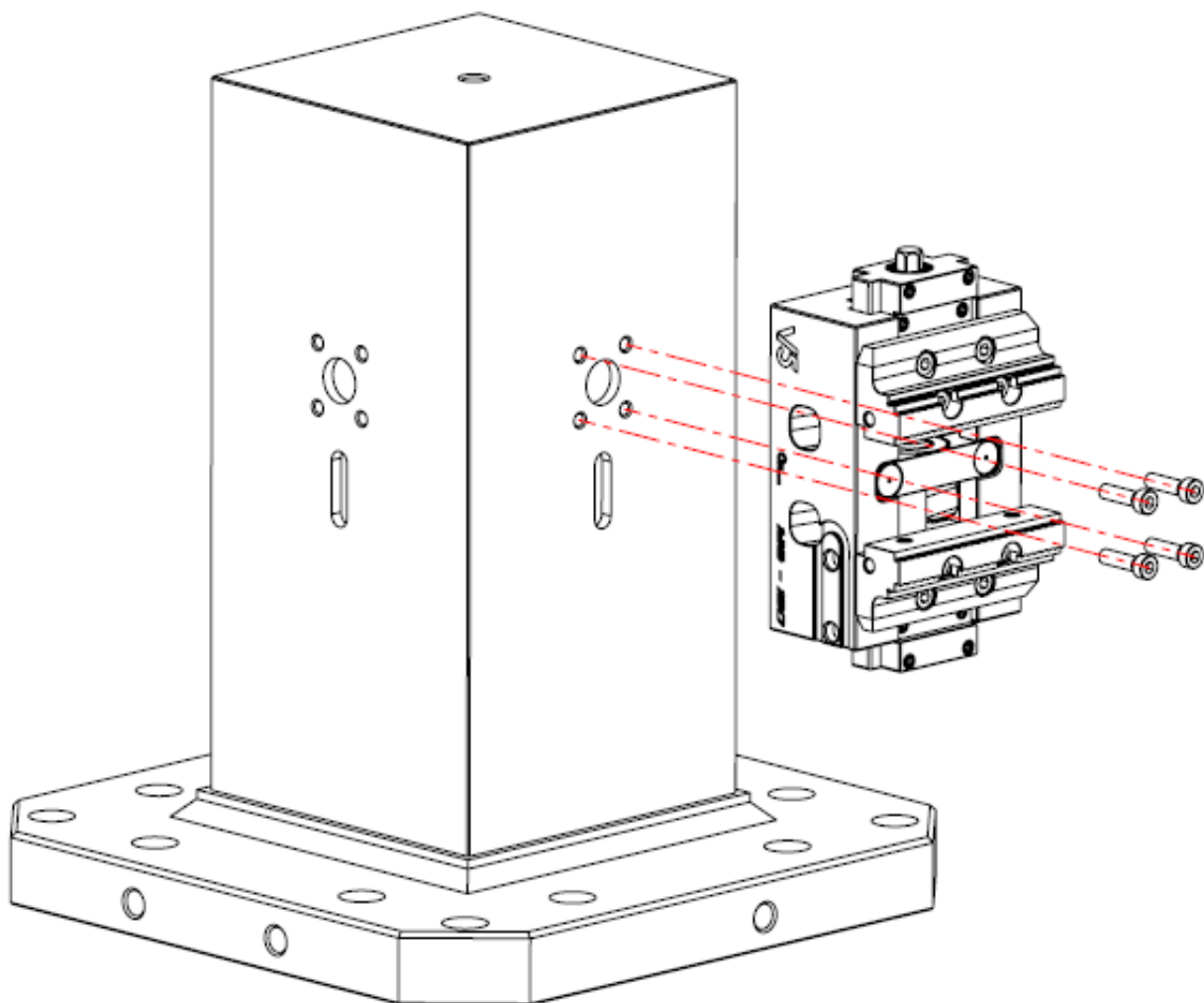


Assembly diagram v5 125-180



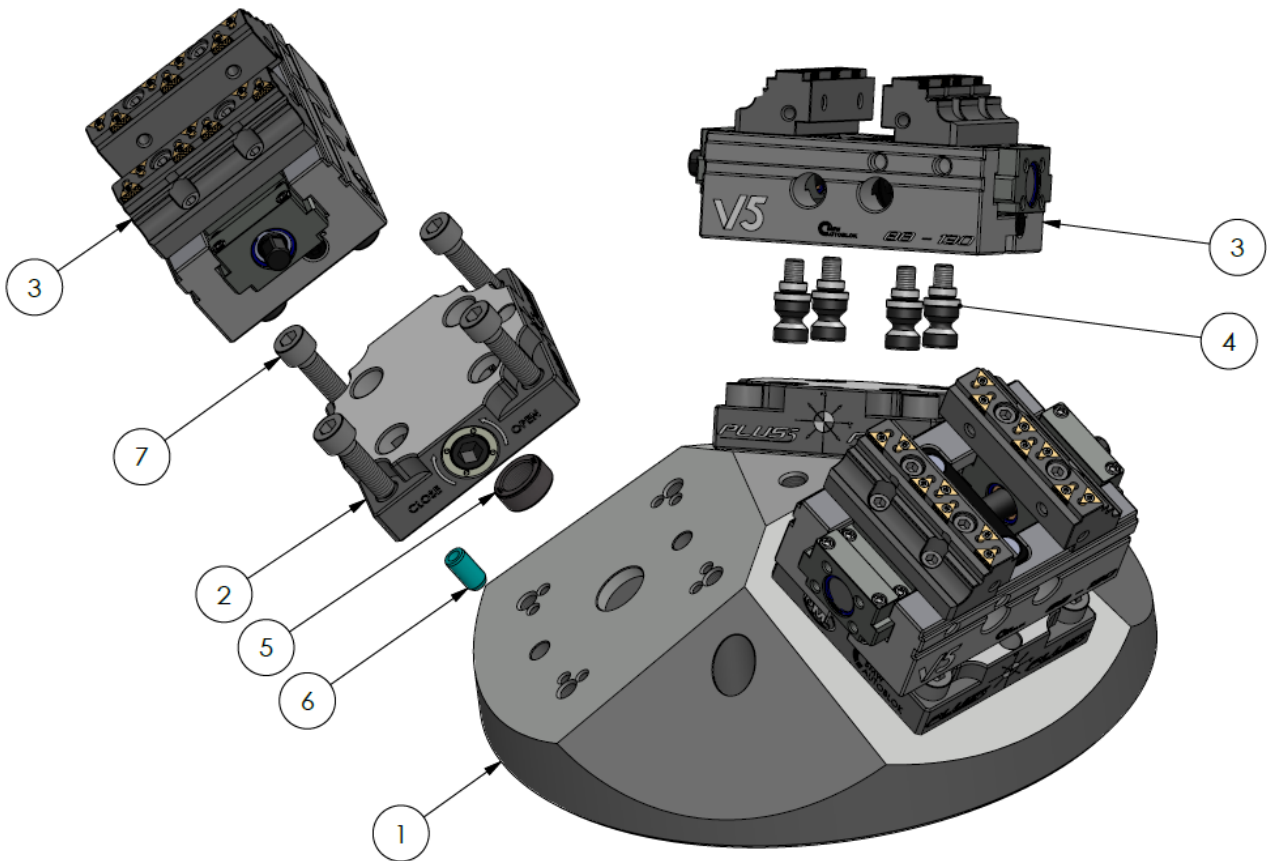
Direct mounting on plate or tombstone V5 125-180

Example of tombstone mounting



Direct mounting on pyramid

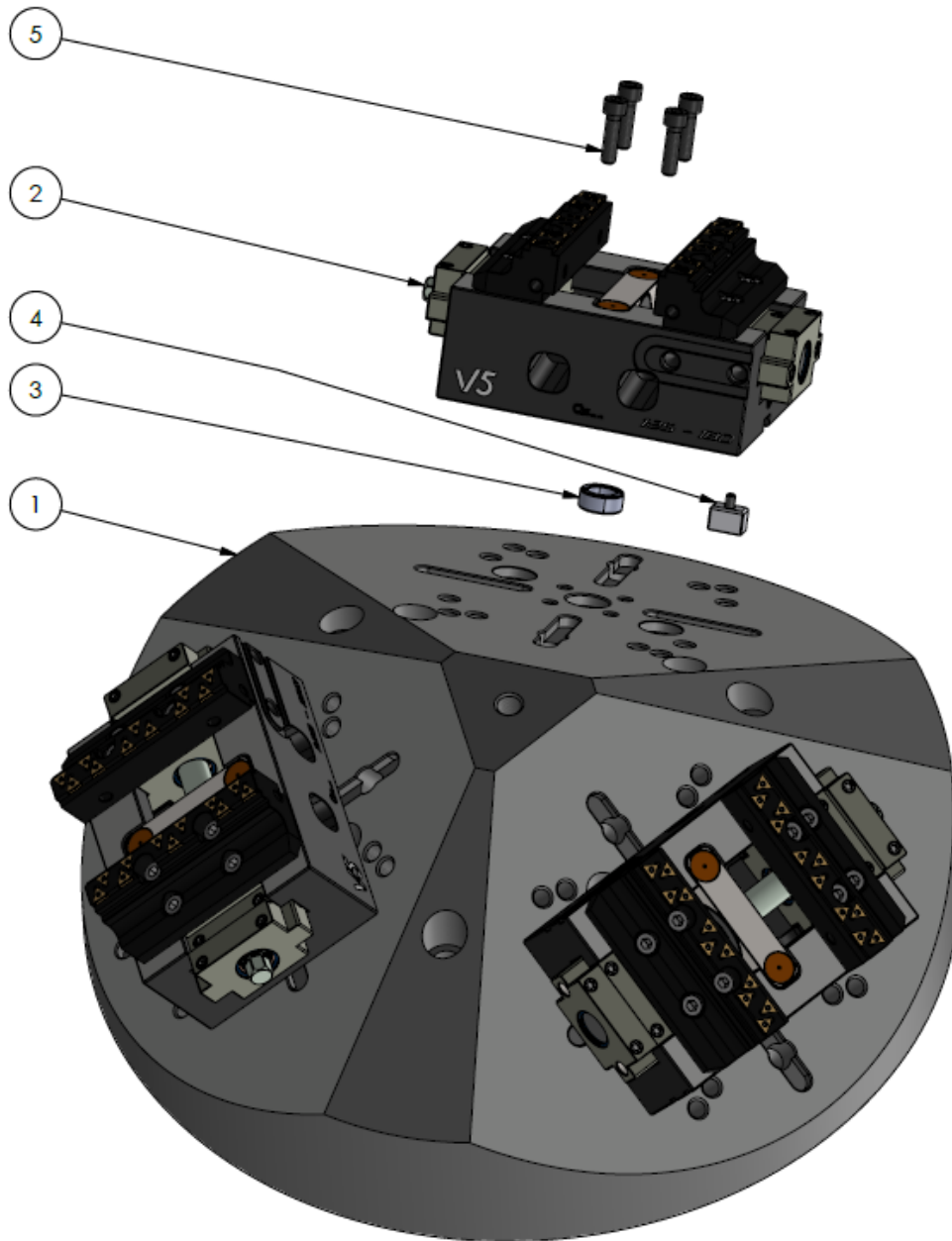
Pyramid + PLUS 5 - 52 + V5 88-130



Position	i.d.	Description	Q.ty
1	58353211	Pyramid V5 88-130 / PLUS 5-52	1
2	46240101	PLUS 5 - 52	3
3	77580303	V5 88-130	3
4	46240214	SET OF PLUS 5-52 PINS	3
5	46230925	Centering bush Ø25h7	3
6	71290817	Cylindrical pin 10x20 h6 Fil DIM7979	3
7	71113051	Screw TCEI M10x35 UNI 5931 12.9	12

Direct mounting on pyramid

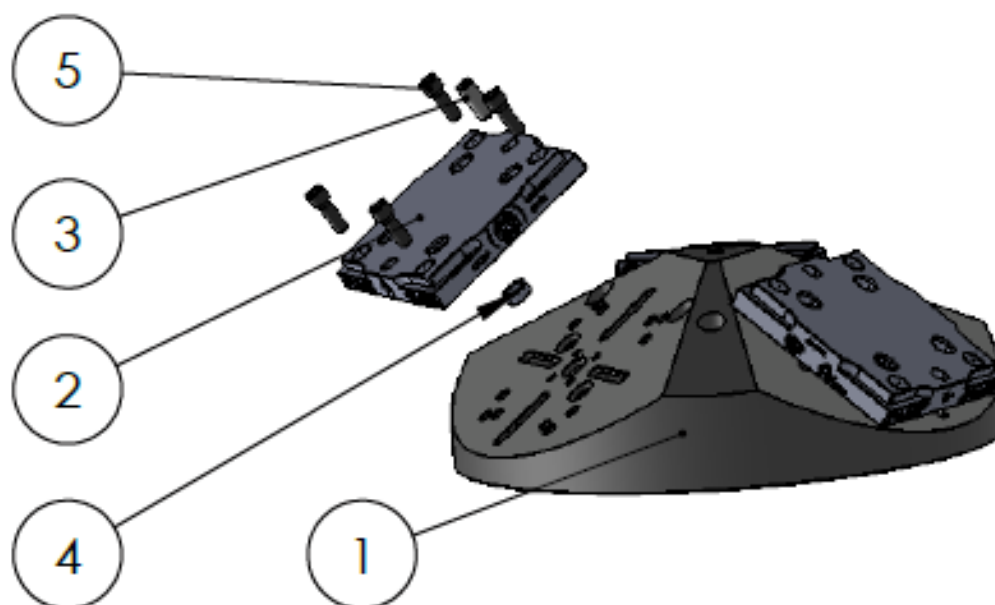
Pyramid + V5 125-180



Position	i.d.	Description	Q.ty
1	58353211	Pyramid Ø500 h 180	1
2	77583333	V5 125-180	3
3	58351392	Positioning key 12h7	3
4	71113065	Screw TCEI M8x30 UNI 5931 12.9	12
5	46230925	Centering bush Ø25h7	3

Direct mounting on pyramid

Pyramid + PLUS 5-96



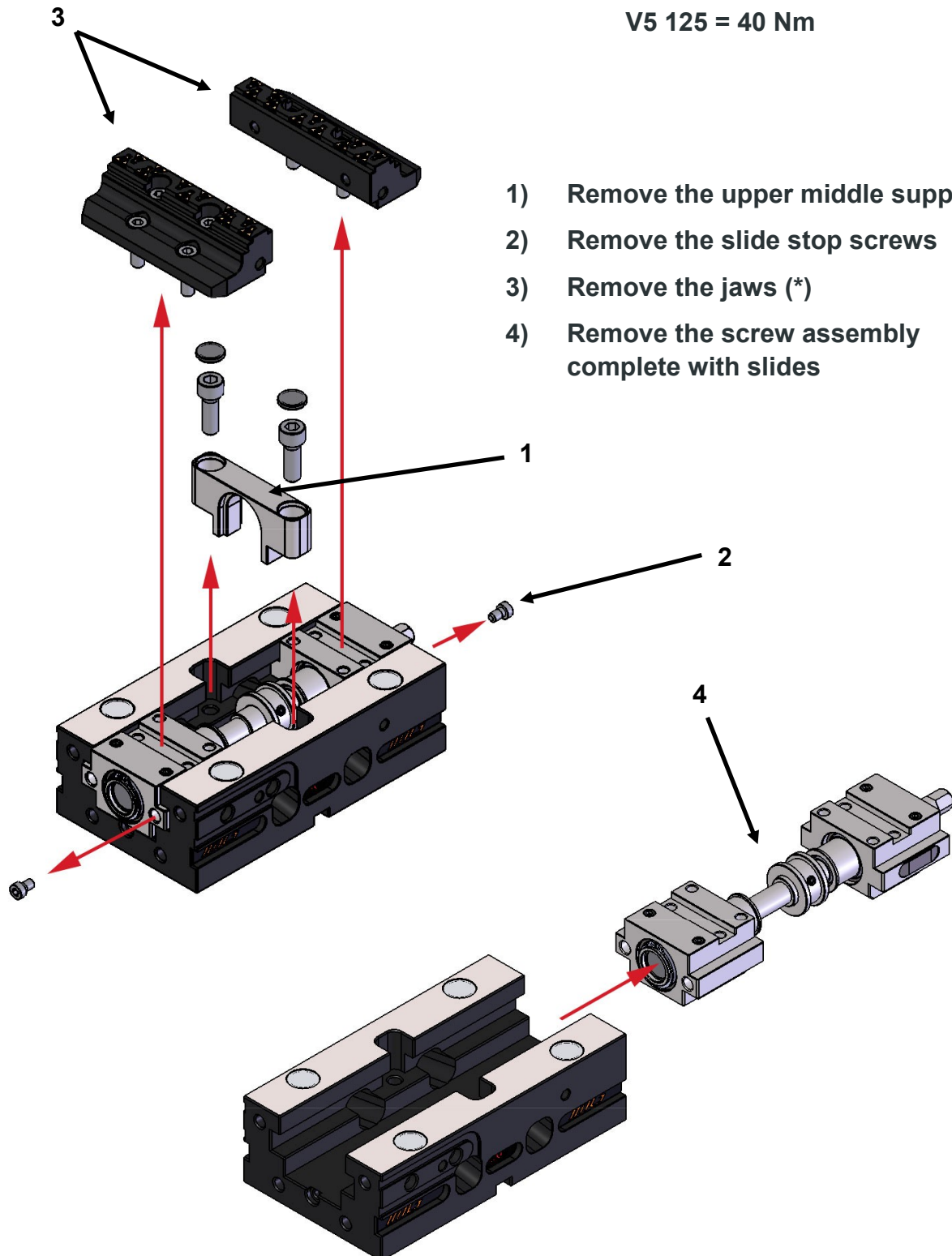
Position	i.d.	Description	Q.ty
1	58353211	Pyramid Ø500 h 180	1
2	46240102	Plus 5 - 96	3
3	71290336	Cylindrical pin 16h6x40 FIL DIN 7979	3
4	46230925	Centering bush Ø25h7	3
5	71113105	Screw TCEI M12x70 UNI 5931 12.9	12

IMG 88 - IMG 125 - IMG 160

(*) jaws screw tightening force

V5 88 0 17,5 Nm

V5 125 = 40 Nm





TCI



MCI



CV



CV-S



FMS



SINTERGRIP



APS



CLAK SYSTEM



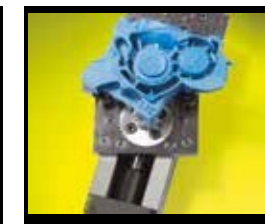
GENIUS



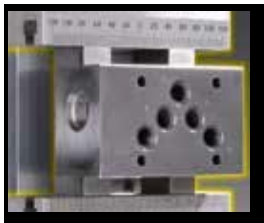
CAM SYSTEM



HOLDING CLAMPS



VARI CLAMP



JAWS



SINTEX



FAST CLAMPS



TWIN VISE



IMG



TDM



A COMPANY OF THE GROUP



OFFICINA MECCANICA LOMBARDA S.r.l.

Viale dell'Industria 6 - 27020 Trivolzio (PV) ITALY

Tel. +39 0382 93 00 00

E-mail: omlspa@omlspa.it

Web: www.omlspa.it