

PLUS5

MECHANICAL ZERO POINT SYSTEM

0.1



PLUS 5 - 52

Plus 5 - Sistema Zero Point meccanico

Pag. 0.1.4



PLUS 5 - 52/96

Perni di bloccaggio

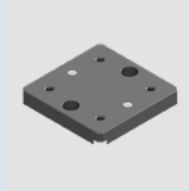
Pag. 0.1.12



PLUS 5 - 96

Plus 5 - Sistema Zero Point meccanico

Pag. 0.1.5



PLUS 5 - 52/96

Piastre di interfaccia pallets Matsuura

Pag. 0.1.14



PLUS 5 ALL IN ONE - 52/96

Plus 5 All in One
Sistema Zero Point meccanico

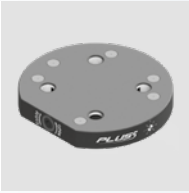
Pag. 0.1.6



PLUS 5 - 52/96

Piastre

Pag. 0.1.15



PLUS 5 INDEX - 96

Plus 5 Index - Sistema Zero Point meccanico

Pag. 0.1.7



PLUS 5 - 52/96

Piramidi alluminio

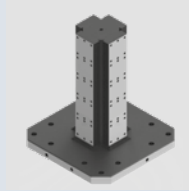
Pag. 0.1.17



PLUS 5 - 96

Piastre serraggio

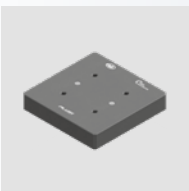
Pag. 0.1.8



PLUS 5 - 52/96

Cubi

Pag. 0.1.18



PLUS 5 - 52/96

Piastre di riduzione

Pag. 0.1.10



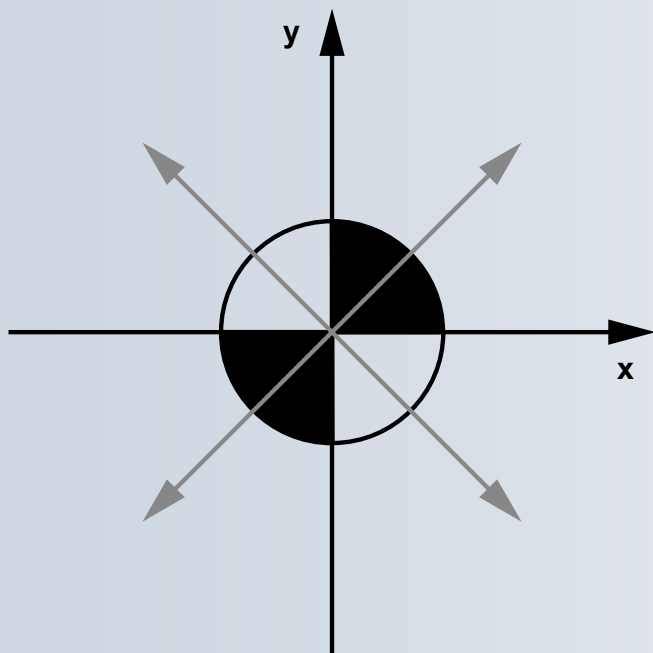
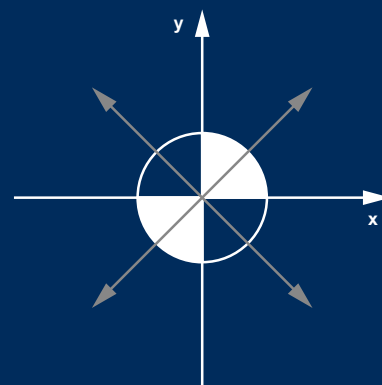
PLUS 5 - 52/96

Accessori

Pag. 0.1.20

PLUS5

MECHANICAL ZERO POINT SYSTEM

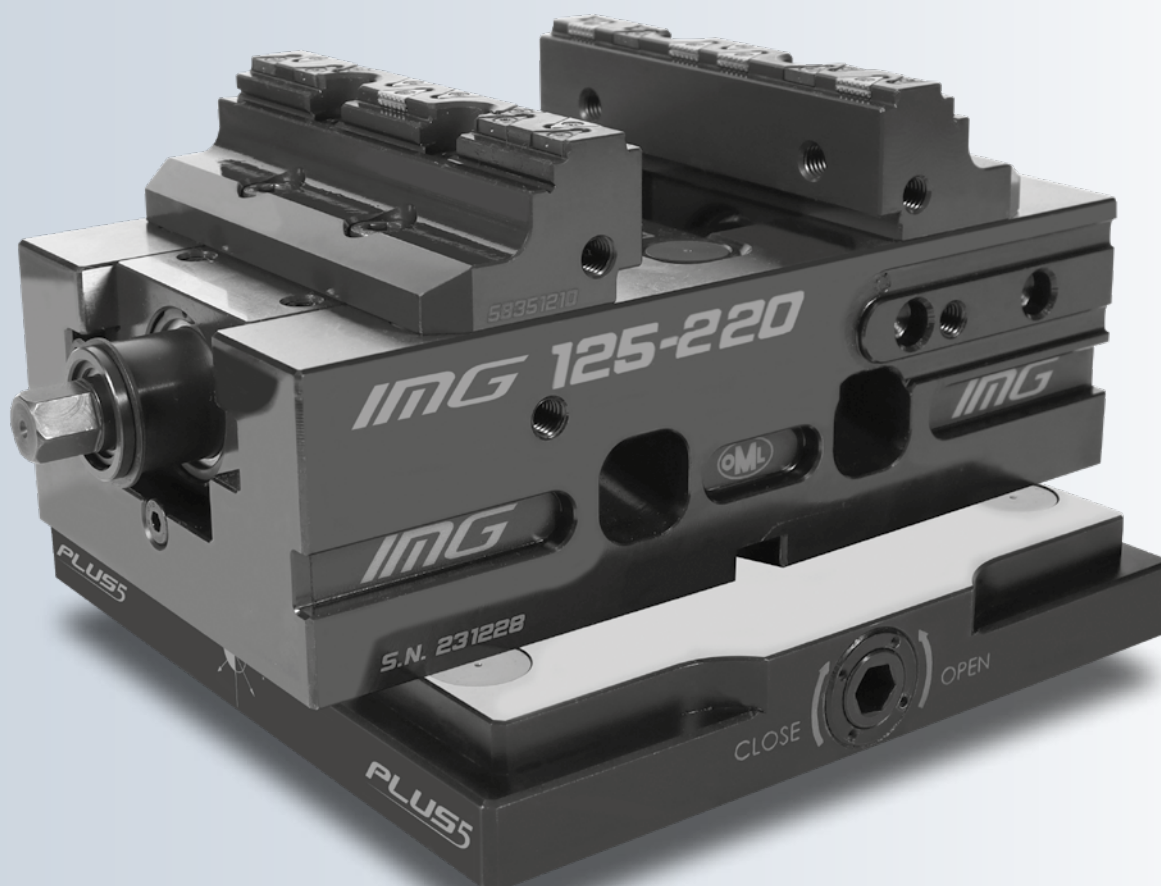


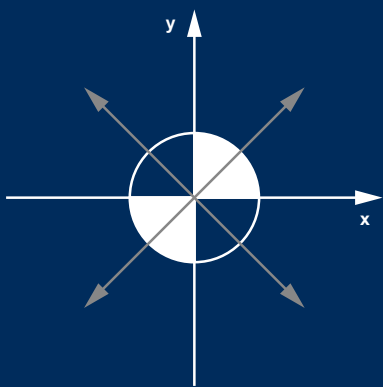
PLUS5

- ▶ Il simbolo qui a lato rappresenta il sistema di trasmissione vettoriale delle forze che agisce vincolando i perni in modo uniforme e in tutte le direzioni.



Guarda il video

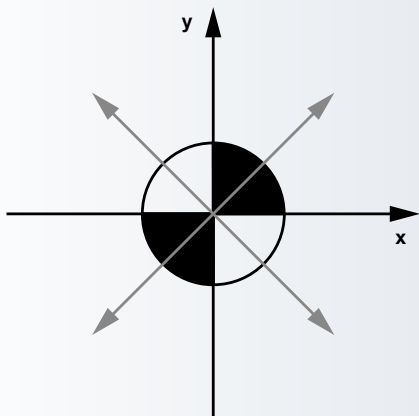




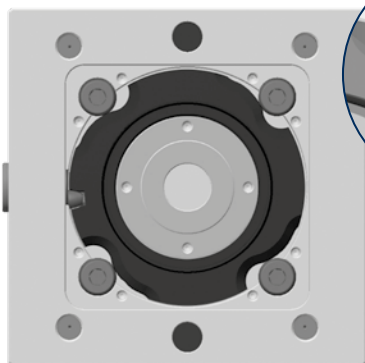
PLUS5

MECHANICAL ZERO POINT SYSTEM

PLUS5 BENEFITS



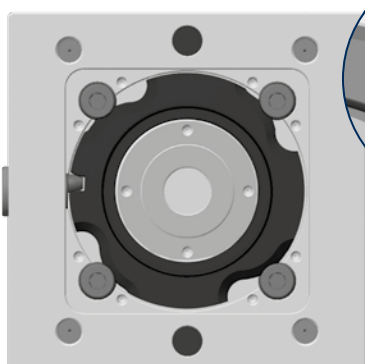
- ▶ Sistema di bloccaggio sbloccaggio dei perni con una rotazione di soli 180 gradi
- ▶ Non necessita di chiave dinamometrica. Il fine corsa determina il bloccaggio/sbloccaggio
- ▶ Ripetibilità < 0.005mm
- ▶ Pull down force 7 kN per Plus 5 52 e 8 kN per Plus 5 96
- ▶ Forza di tenuta 40 kN per Plus 5 52 e 80 kN per Plus 5 96



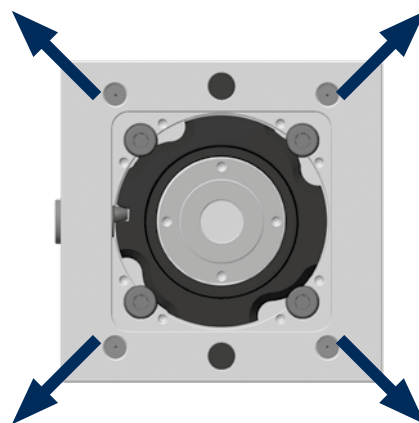
Aperto

Il meccanismo progettato per bloccare i perni è costituito da una camma azionata da un perno eccentrico.

Il sistema garantisce elevate prestazioni in termini di precisione e forza di bloccaggio. Ciò è dovuto in particolare al fatto che la camma blocca contemporaneamente i 4 perni verso l'esterno.



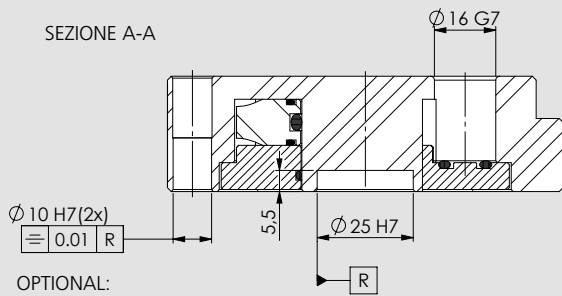
Chiuso



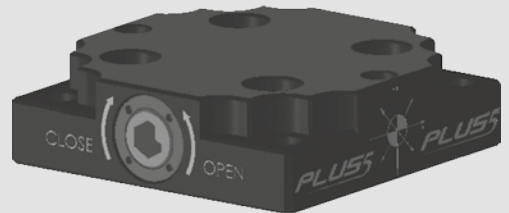
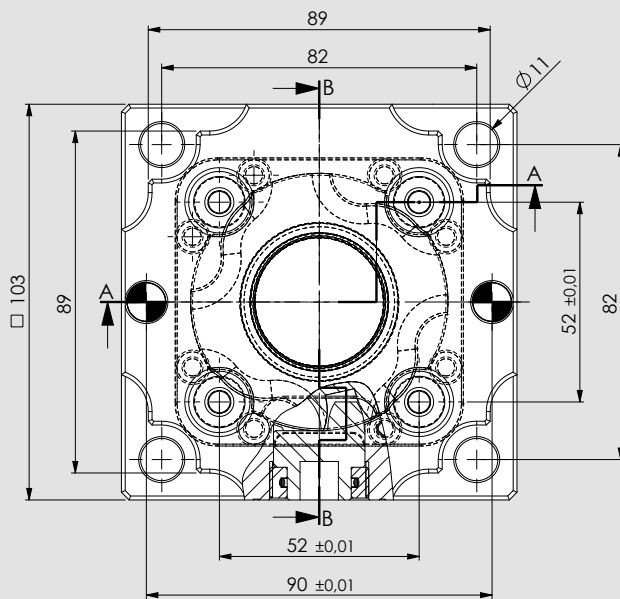
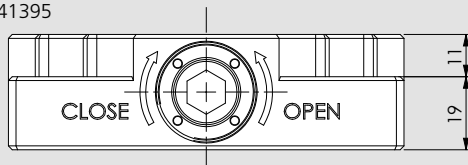


- Completo di chiave 10mm
- Perni non inclusi

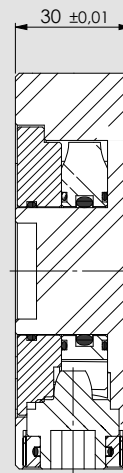
SEZIONE A-A



OPTIONAL:
Chiavetta di posizionamento multislot
58341393 / 58341395



SEZIONE B-B



Soggetto a modifiche tecniche

Cod.

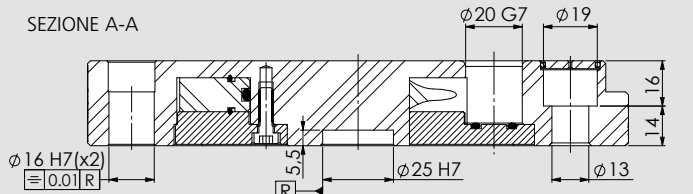
46240101

Peso (Kg)

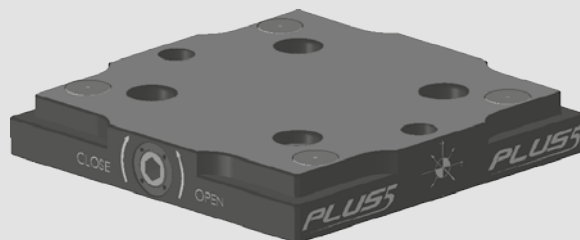
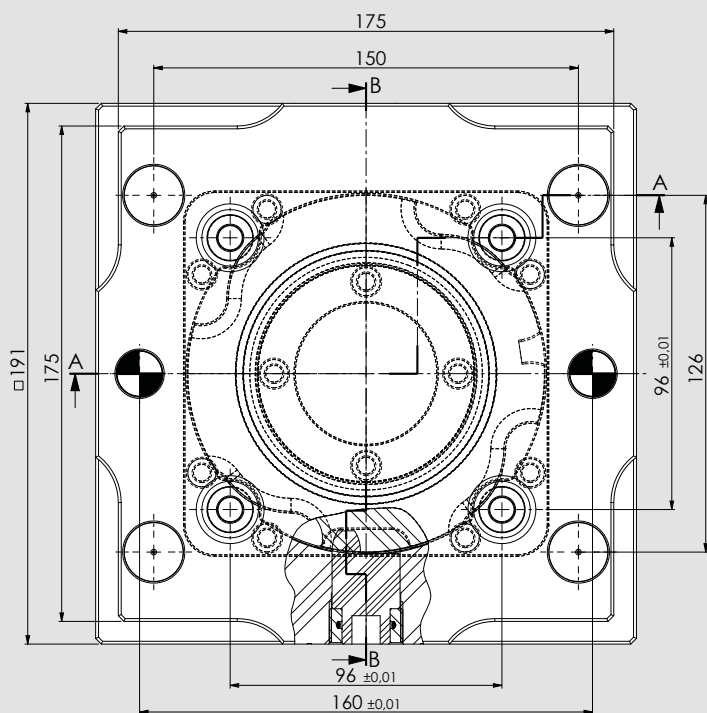
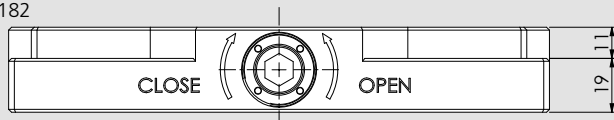
2



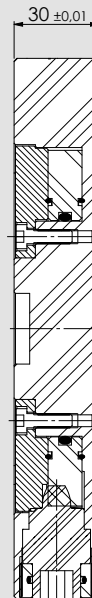
- Completo di chiave 10mm
- Perni non inclusi



OPTIONAL:
Chiavetta di posizionamento multislot
71290182



SEZIONE B-B



Soggetto a modifiche tecniche

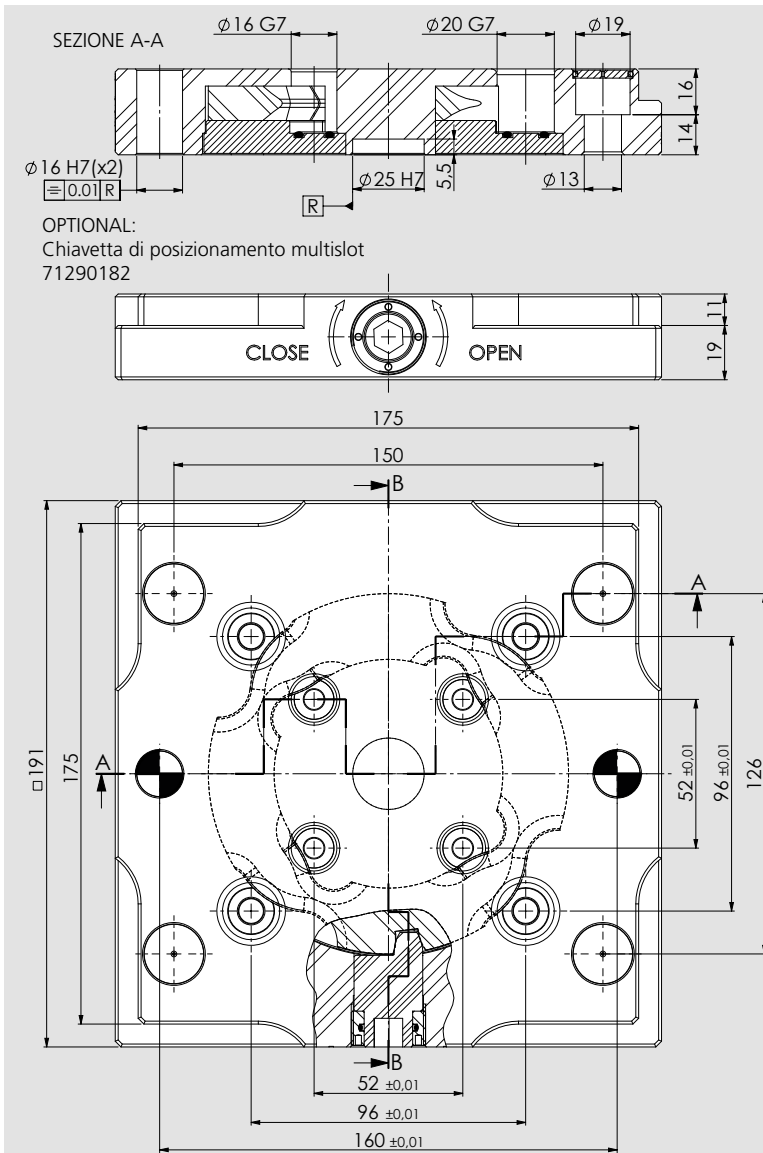
Cod.	Peso (Kg)
46240102	7,5

PLUS 5 All in One 52/96

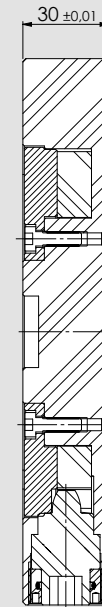
PLUS 5 All in One - Sistema Zero Point meccanico



- Completo di:
 - chiave 10mm
 - tappi di protezione (Plus 5 52 / 96)
- Perni non inclusi



SEZIONE B-B



Soggetto a modifiche tecniche

Cod.

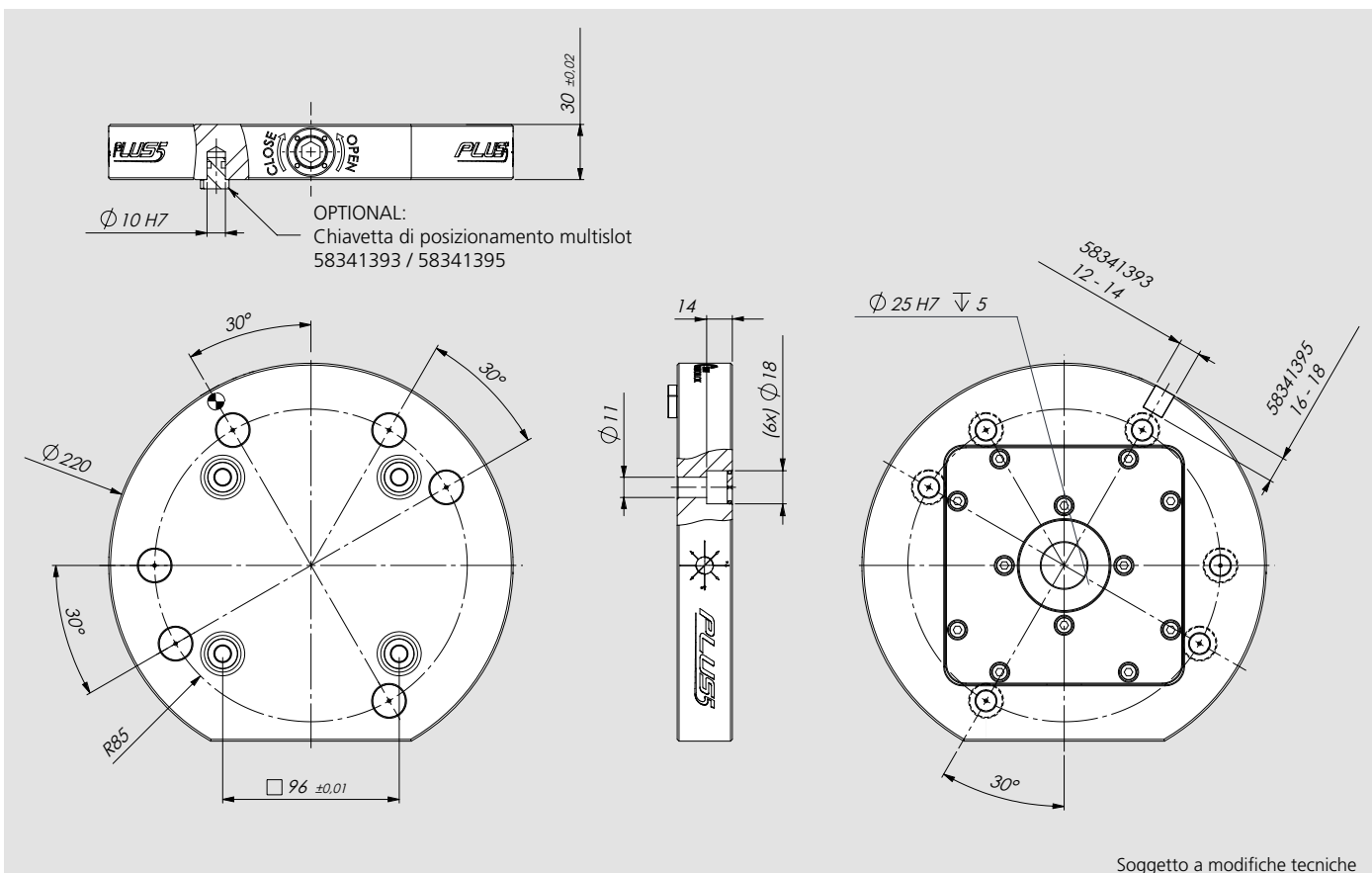
46240103

Peso (Kg)

7,5

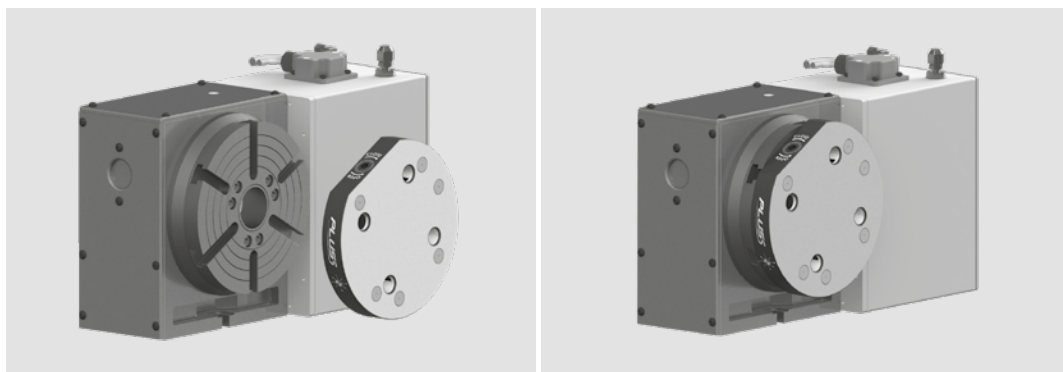


- Completo di chiave 10mm
- Perni non inclusi



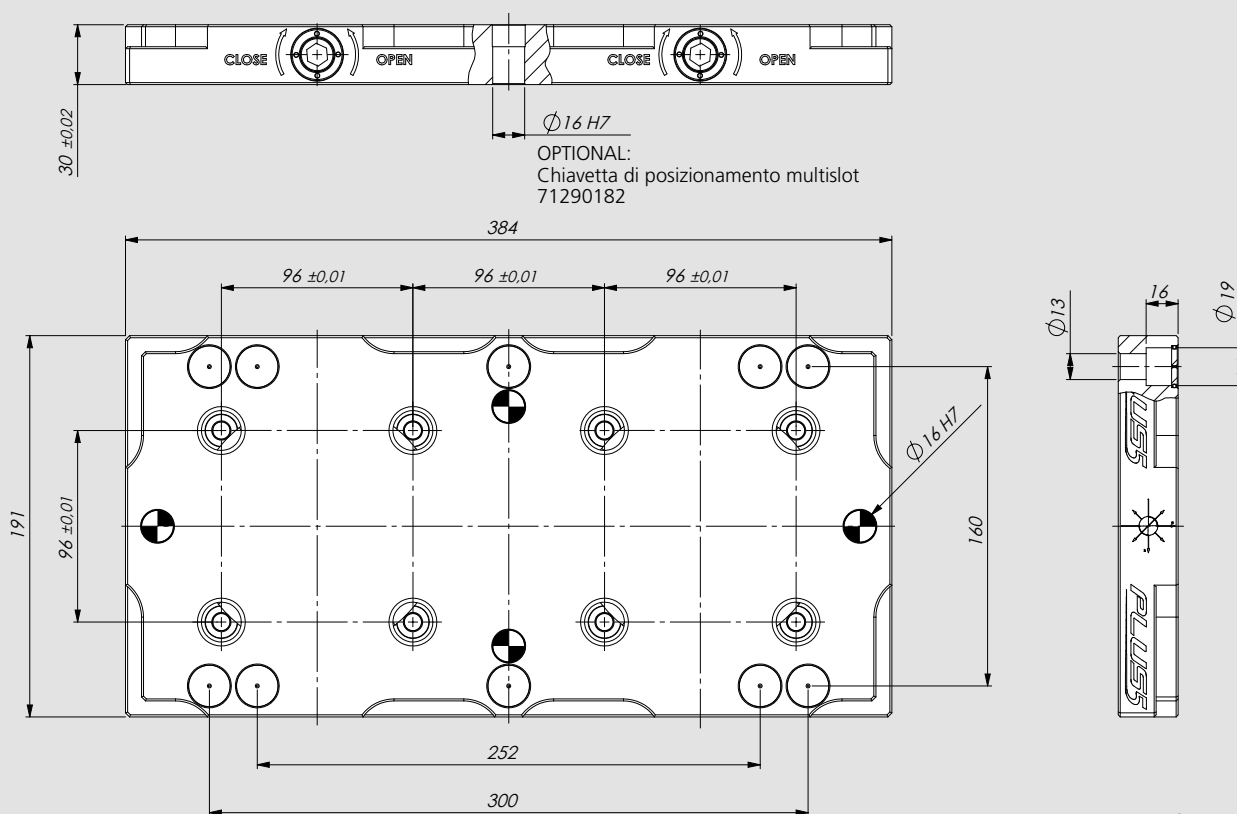
Cod.	Peso (Kg)
46240112	8

Esempio di impiego





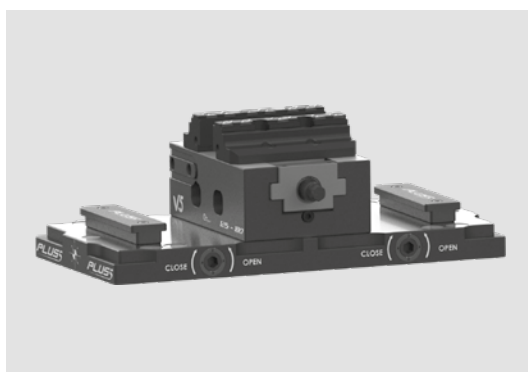
- Completo di:
 - chiave 10mm
 - n. 2 piastrine di sicurezza (cod. 46248215)
- Perni non inclusi

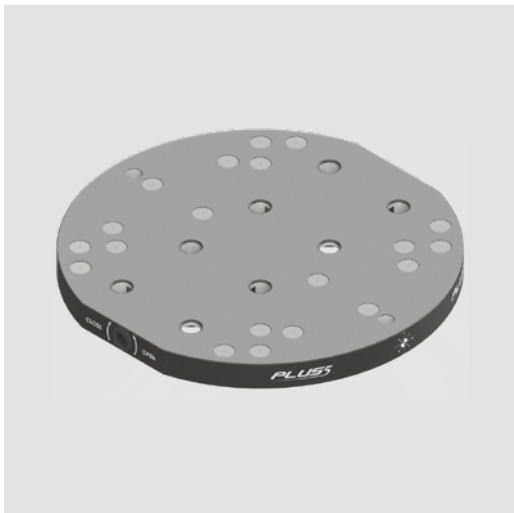


Soggetto a modifiche tecniche

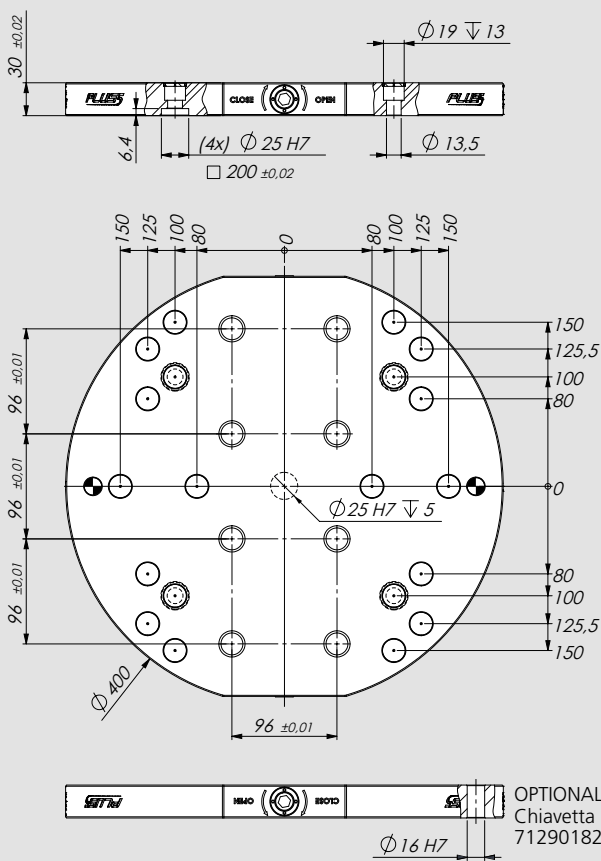
Cod.	Peso (Kg)
46248210	16

Esempio di impiego





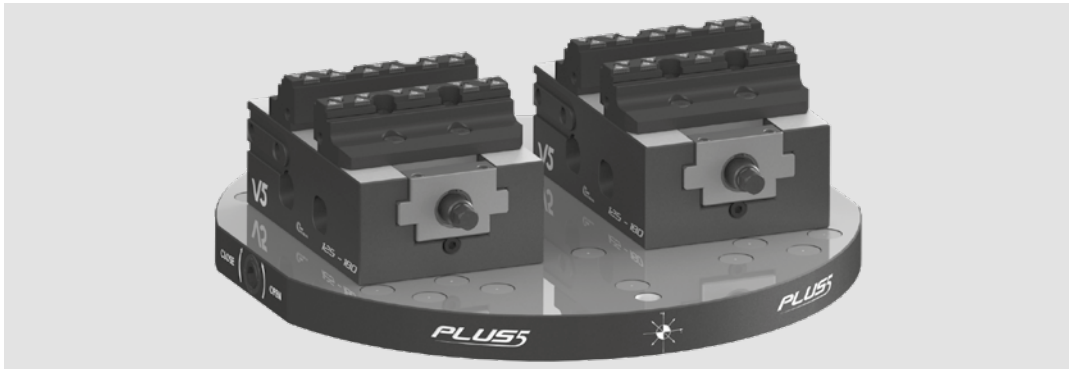
- Completo di:
 - chiave 10mm
 - n. 2 piastrine di sicurezza (cod. 46248215)
- Perni non inclusi

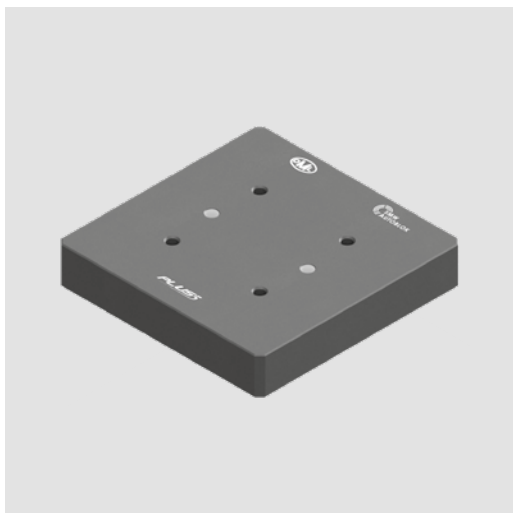


Soggetto a modifiche tecniche

Cod.	Peso (Kg)
46248220	27

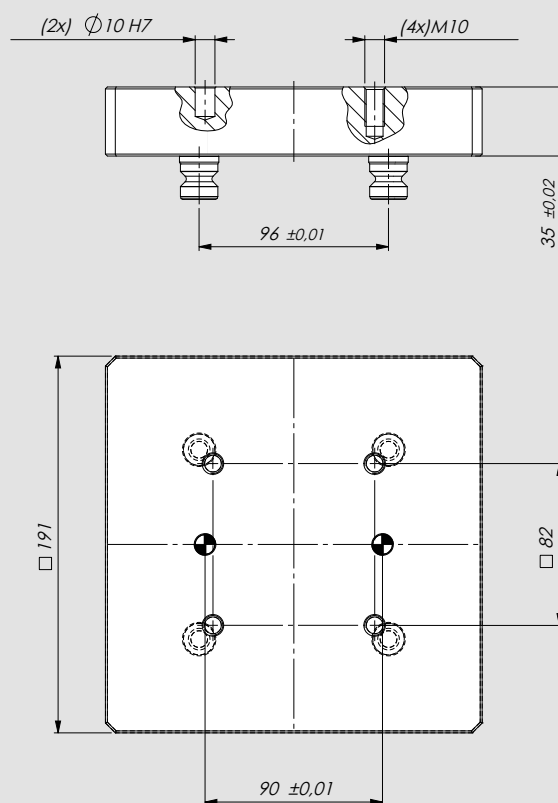
Esempio di impiego





Completo di

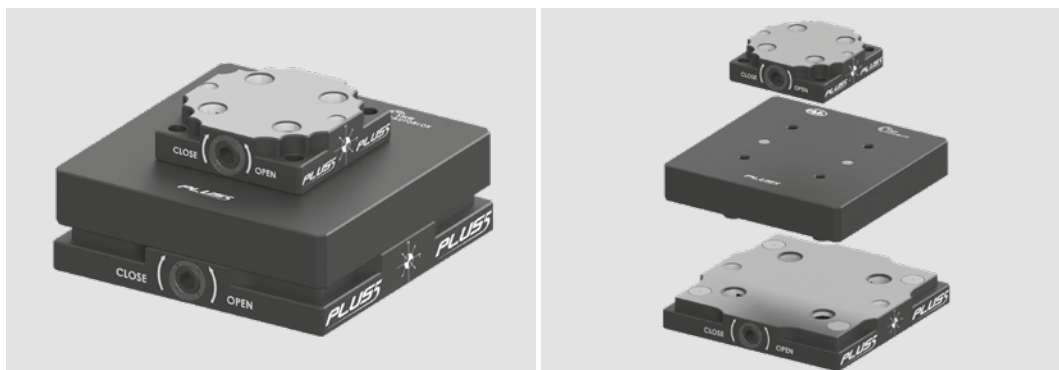
- Viti e spine di fissaggio per Plus 5 52
- Set 4 Perni Plus 5 96

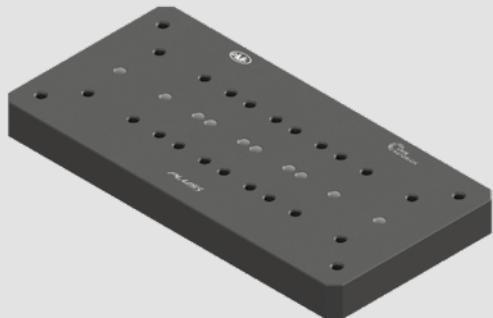


Soggetto a modifiche tecniche

Cod.	Peso (Kg)
46242210	10

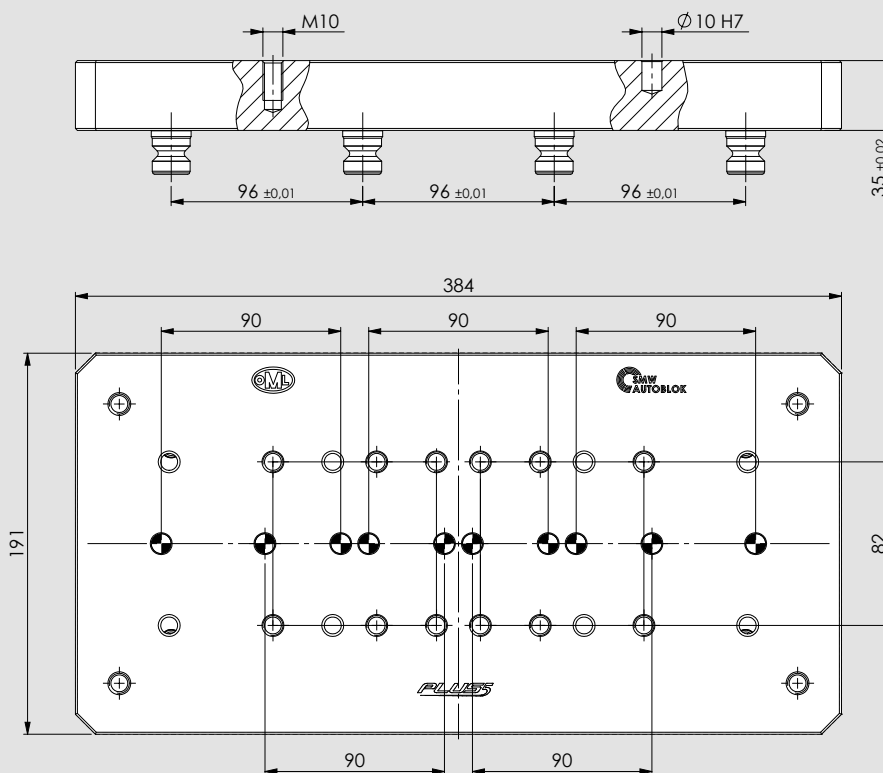
Esempio di impiego





Completo di

- Viti e spine di fissaggio per Plus 5 52
- n. 2 Set 4 Perni Plus 5 96



Soggetto a modifiche tecniche

Cod.	Peso (Kg)
46242220	21

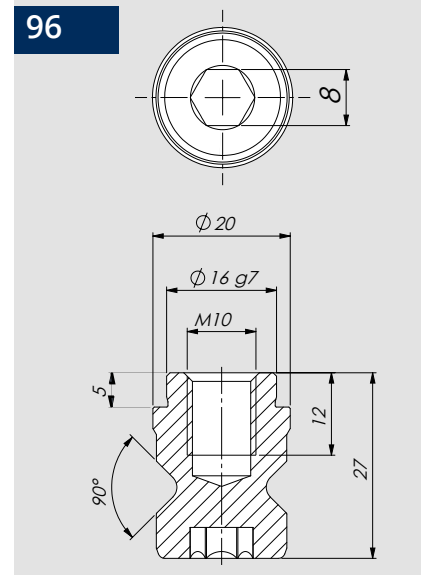
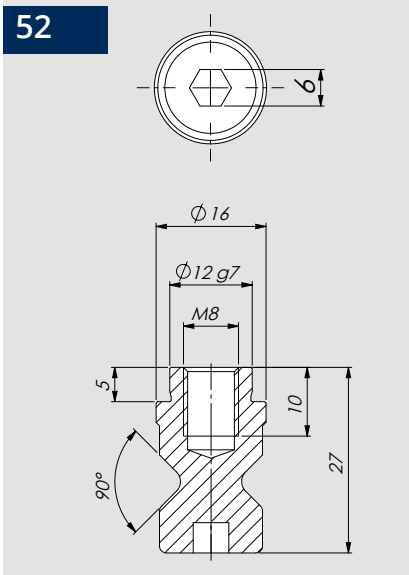
Esempio di impiego



Perni di bloccaggio



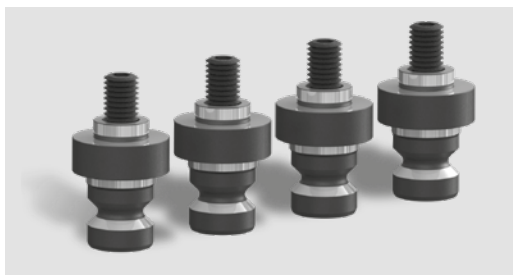
- Completi di grano M8 per Plus5 52 e M10 per Plus5 96



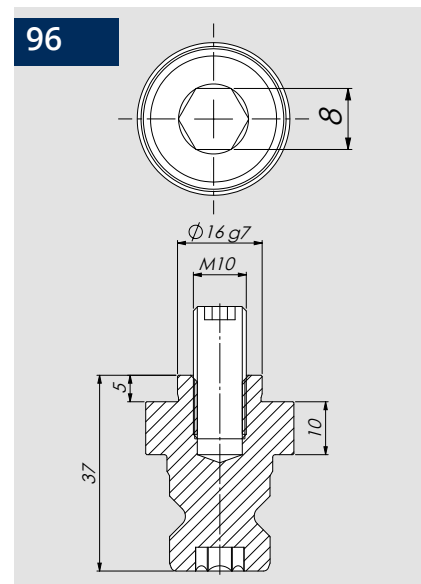
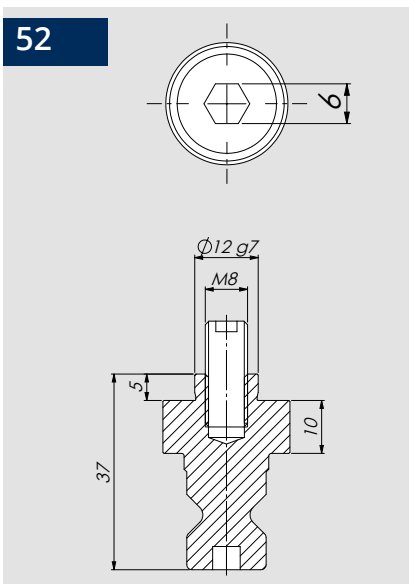
Descrizione	Cod.	Peso (Kg)
Set 4 perni per PLUS 5 - 52	46240214	0,12
Set 4 perni per PLUS 5 - 96	46240224	0,20
Perno per PLUS 5 - 52	46240210	0,03
Perno per PLUS 5 - 96	46240220	0,05

Le dimensioni del perno identificano la compatibilità con altri perni presenti sul mercato

Perni di bloccaggio rialzati

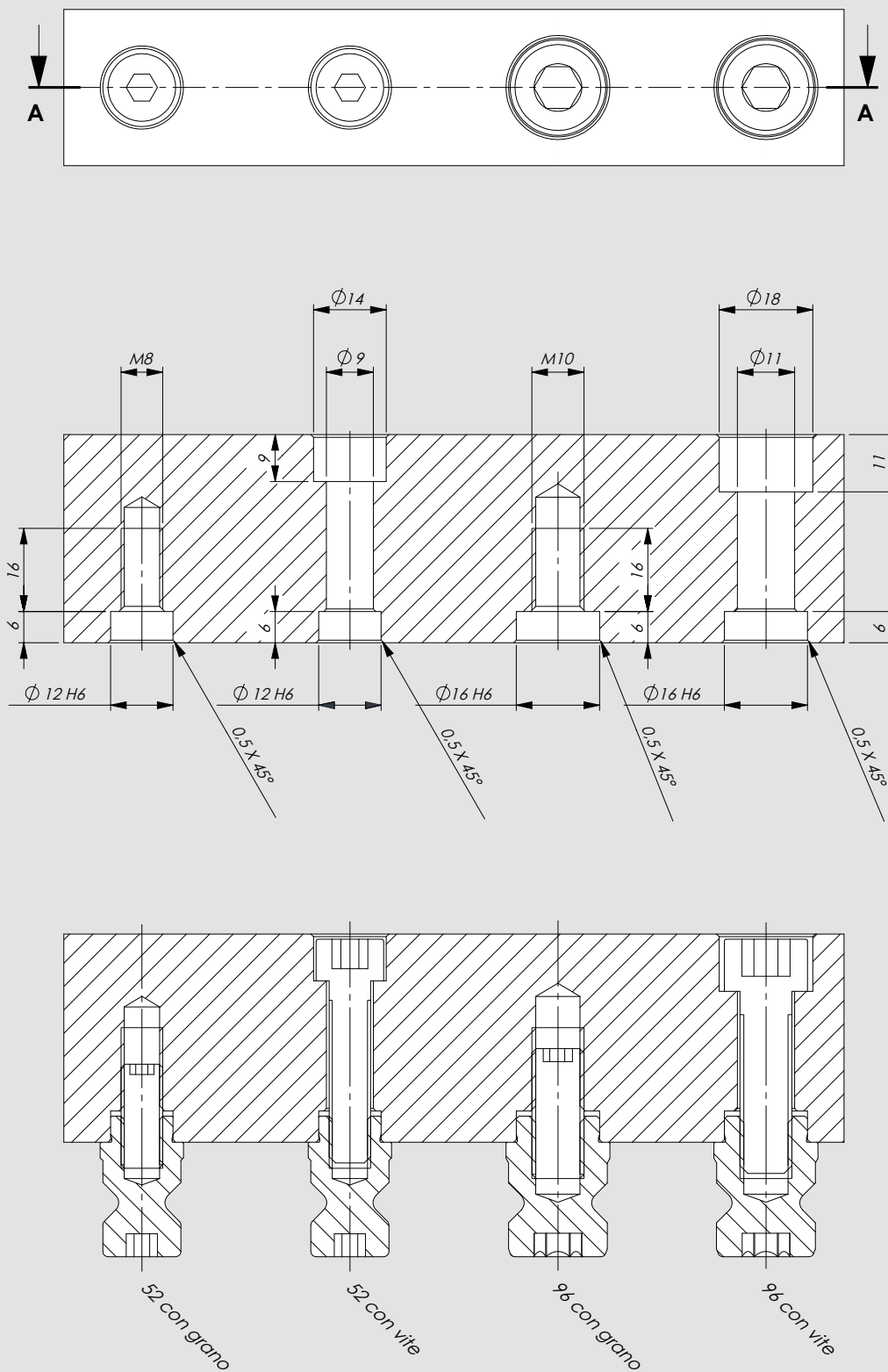


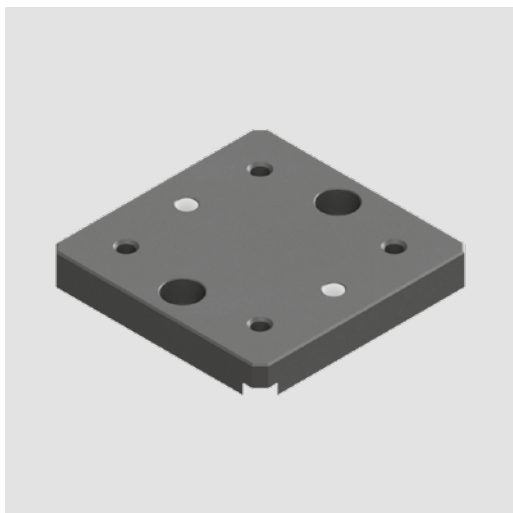
- Completi di grano M8 per Plus5 52 e M10 per Plus5 96



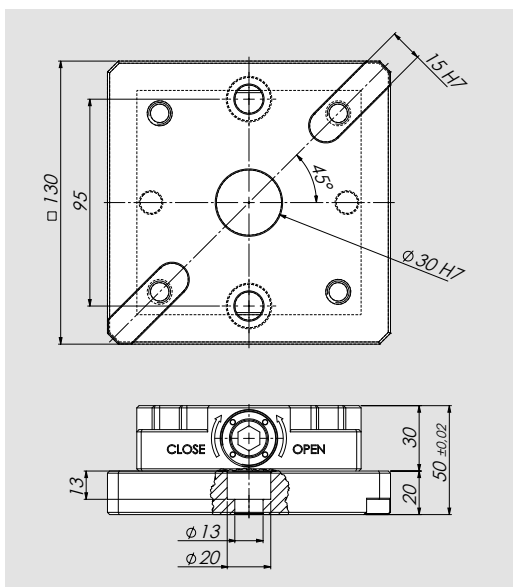
Descrizione	Cod.	Peso (Kg)
Set 4 perni rialzati per PLUS 5 - 52	46240234	0,12
Set 4 perni rialzati per PLUS 5 - 96	46240244	0,20
Perno rialzato per PLUS 5 - 52	46240230	0,03
Perno rialzato per PLUS 5 - 96	46240240	0,05

Le dimensioni del perno identificano la compatibilità con altri perni presenti sul mercato





Esempio di impiego

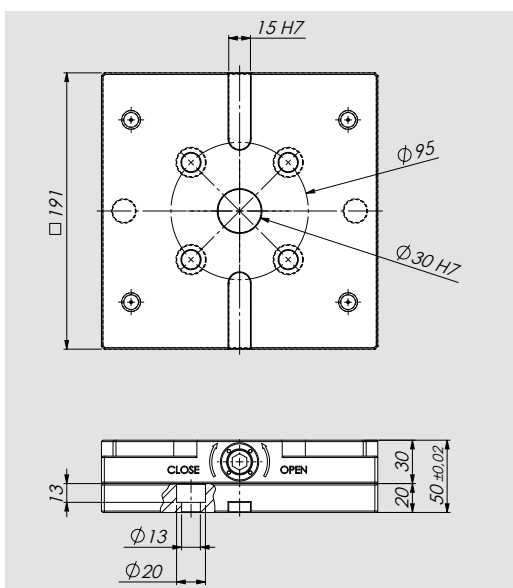


PLUS 5 - 52

Piatra di interfaccia pallets Matsuura

Completo di viti e spine di fissaggio
Plus 5 non incluso

Cod.	Peso (Kg)
46242110	2,5

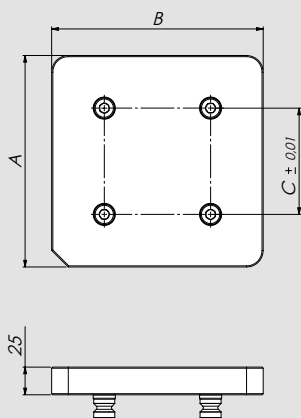


PLUS 5 - 96

Piatra di interfaccia pallets Matsuura

Completo di viti e spine di fissaggio
Plus 5 non incluso

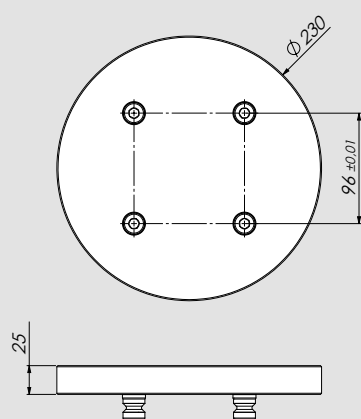
Cod.	Peso (Kg)
46242120	5,5



PLUS 5 - 52 / 96 Piastra liscia

Completo di set 4 perni

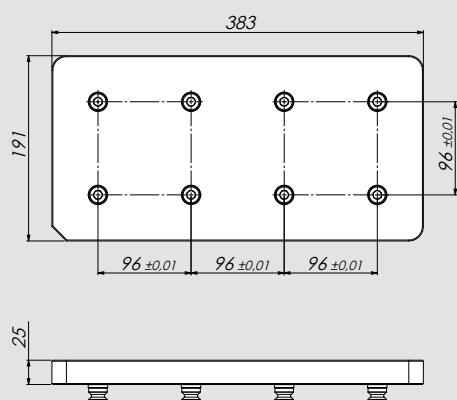
Cod.	Tipo	A	B	C	Peso
46247710	52	103	103	52	2 Kg
46247720	96	191	191	96	7 Kg



PLUS 5 - 96 Piastra liscia tonda

Completo di set 4 perni

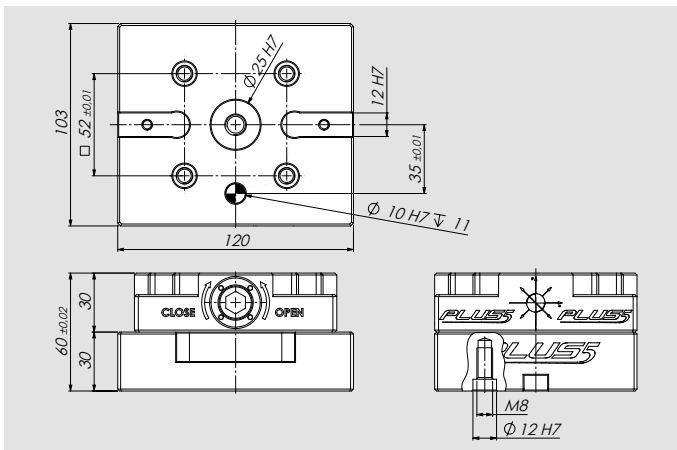
Cod.	Peso (Kg)
46247730	8



PLUS 5 - 96 Piastra liscia doppia

Completo di n. 2 set 4 perni Plus 5 96

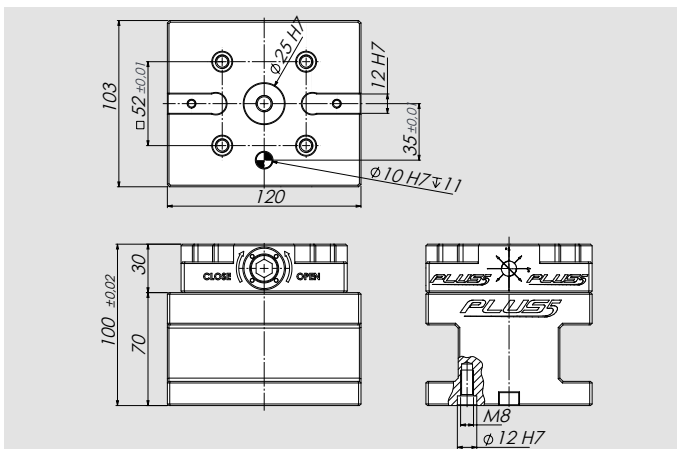
Cod.	Peso (Kg)
46247740	15



RIALZO PLUS 5 - 52 (H tot = 60)

Completo di viti e spine di fissaggio
Plus 5 non incluso

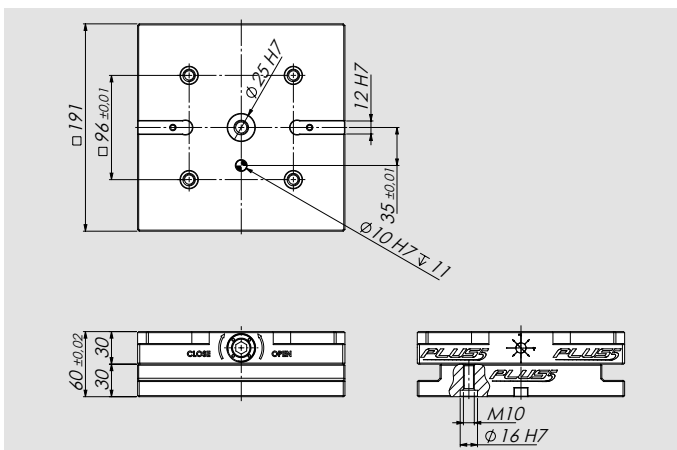
Cod.	Peso (Kg)
46242018	2



RIALZO PLUS 5 - 52 (H tot = 100)

Completo di viti e spine di fissaggio
Plus 5 non incluso

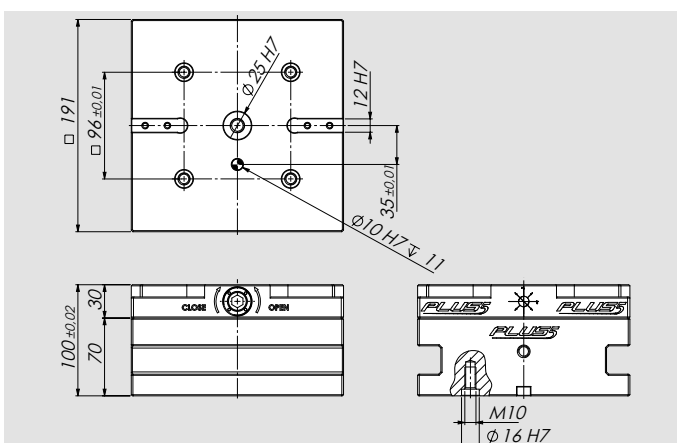
Cod.	Peso (Kg)
46242019	5



RIALZO PLUS 5 - 96 (H tot = 60)

Completo di viti e spine di fissaggio
Plus 5 non incluso

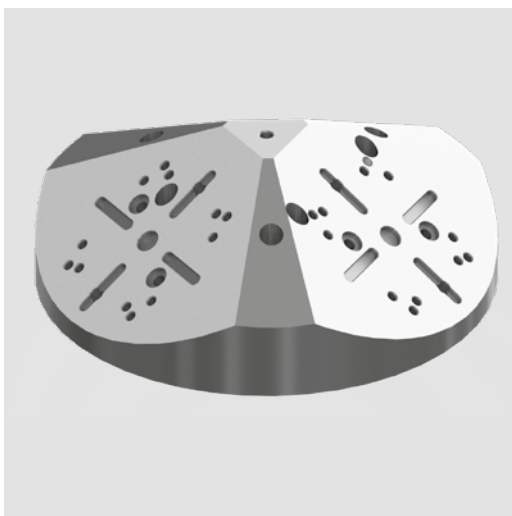
Cod.	Peso (Kg)
46242028	7



RIALZO PLUS 5 - 96 (H tot = 100)

Completo di viti e spine di fissaggio
Plus 5 non incluso

Cod..	Peso (Kg)
46242029	18



Applicazioni/Benefici cliente

- Ideale per macchine a 5 assi
- Design compatto
- Possibilità di montaggio diretto su tavola macchina con cave radiali a 45 / 60 gradi
- Possibilità di montaggio diretto su pallet APS con moduli passo 200/250mm e Plus 5

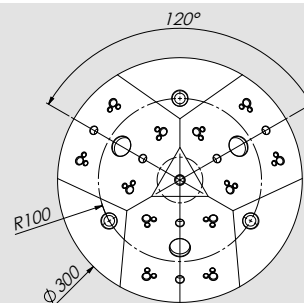
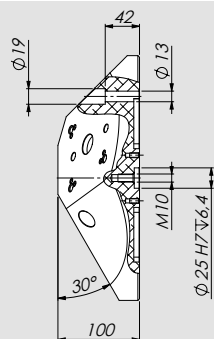
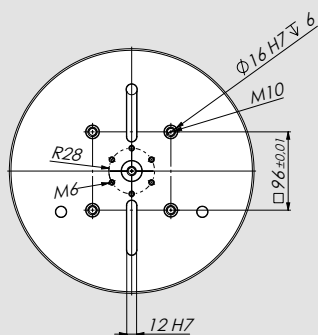
Caratteristiche tecniche

- Materiale: ALU

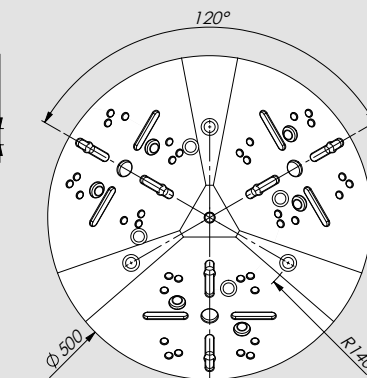
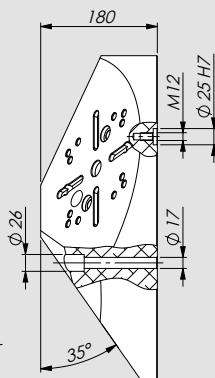
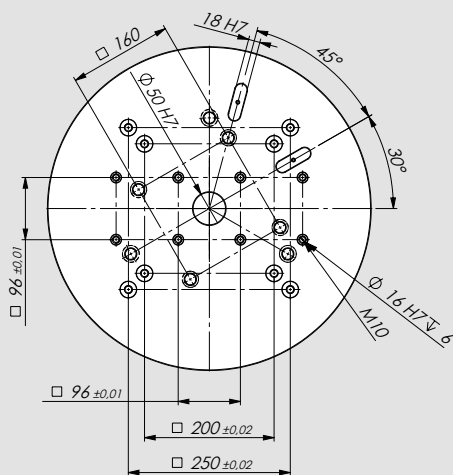
Dotazione standard

Chiavette e viti per IMG
 Perni e viti per Plus 5

IMG 88 - 130
 PLUS 5 - 52

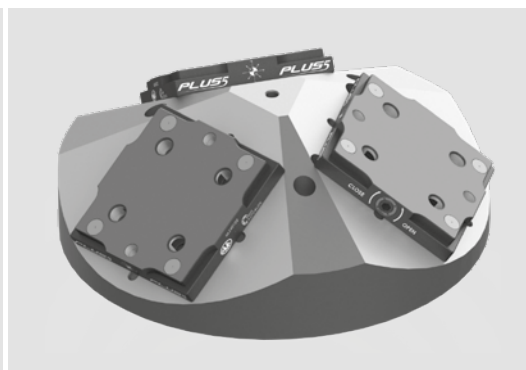
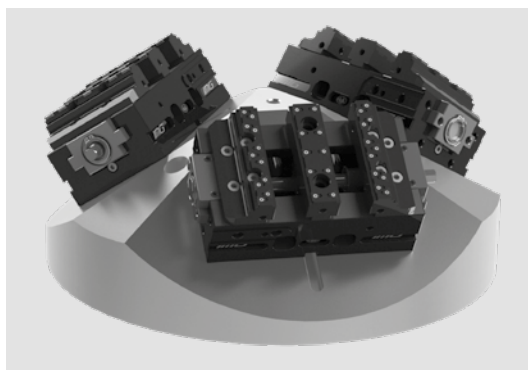


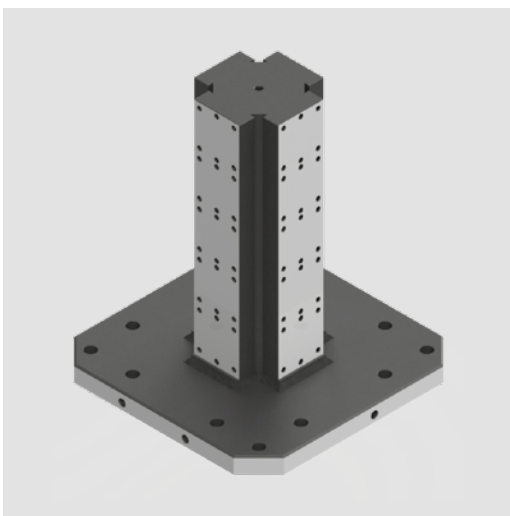
IMG 125 - 180
 IMG 125 - 220
 PLUS 5 - 96



Tipo	Cod.	Peso
Per IMG 88-130 e PLUS 5 - 52	58343210	12 Kg
Per IMG 125-180, IMG 125-220 e PLUS 5 - 96	58353210	55 Kg

Esempio di impiego





Applicazioni/Benefici cliente

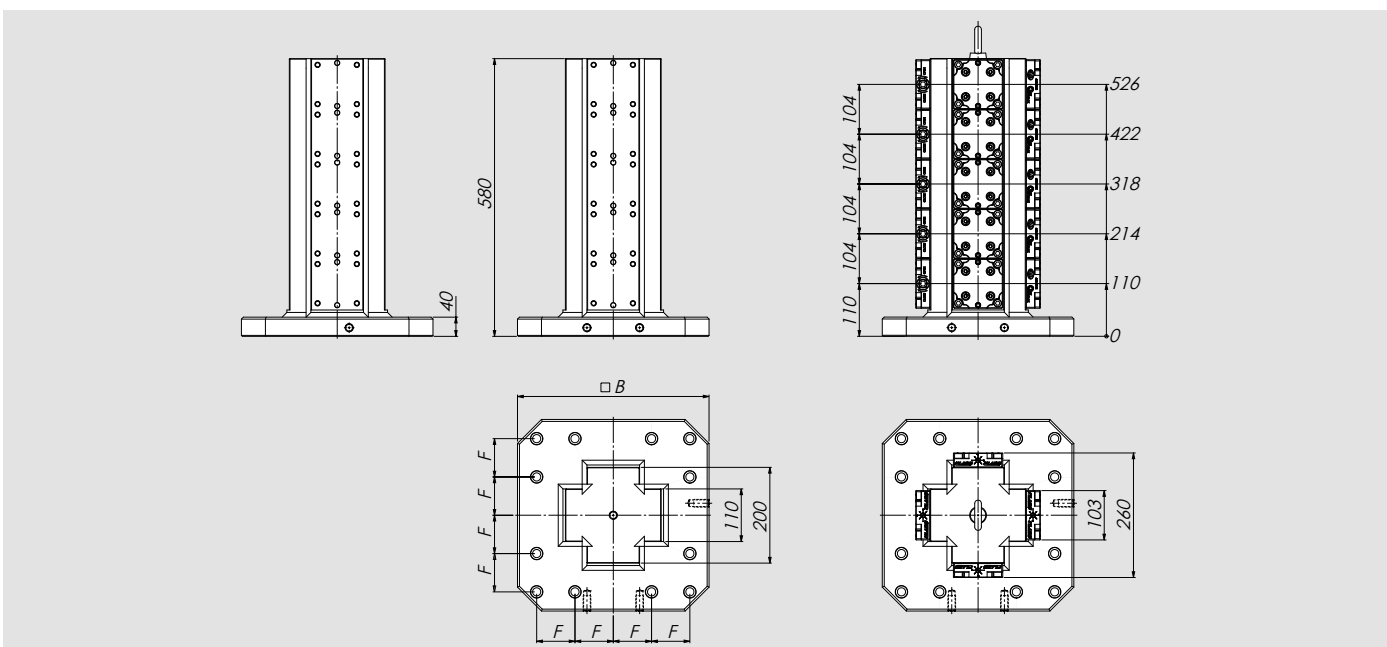
- Ideale per macchine orizzontali
- Design compatto

Caratteristiche tecniche

- Materiale: acciaio

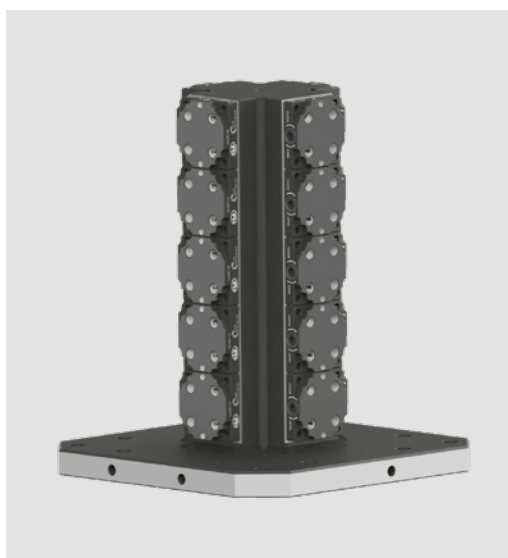
Dotazione standard

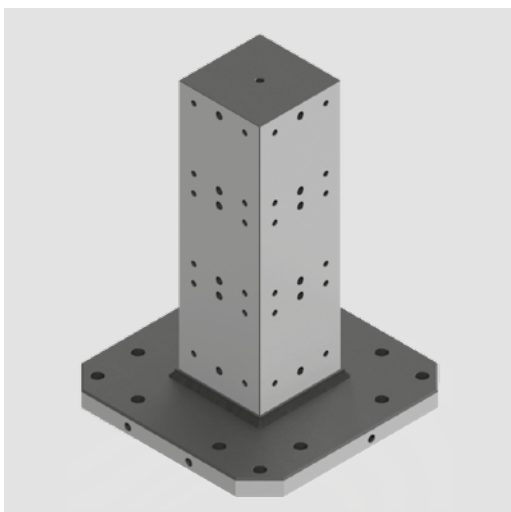
Cubo in acciaio completo di viti e spine di fissaggio



Tipo	Cod.	B	F	Peso	Peso (solo cubo)
Cubo Plus 5 - 52 - Base 400	46247110	400	80	162 Kg	162 Kg
Cubo Plus 5 - 52 - Base 500	46247120	500	100	190 Kg	190 Kg

Esempio di impiego





Applicazioni/Benefici cliente

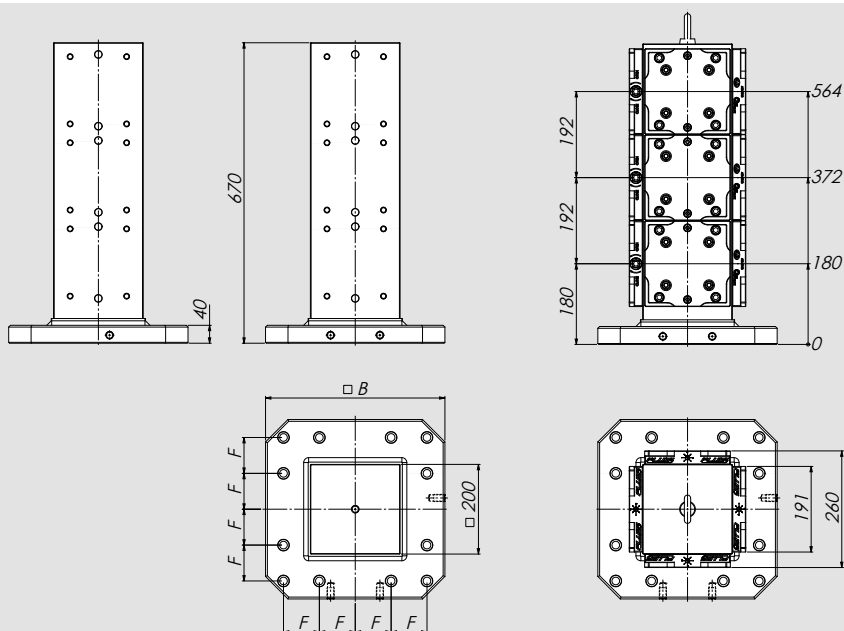
- Ideale per macchine orizzontali
- Design compatto

Caratteristiche tecniche

- Materiale: acciaio

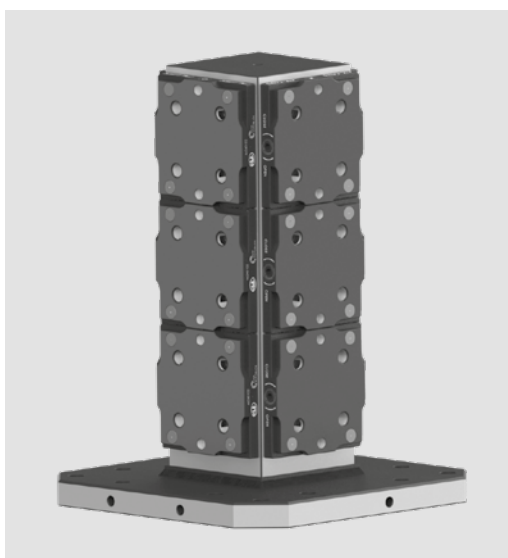
Dotazione standard

Cubo in acciaio completo di viti e spine di fissaggio



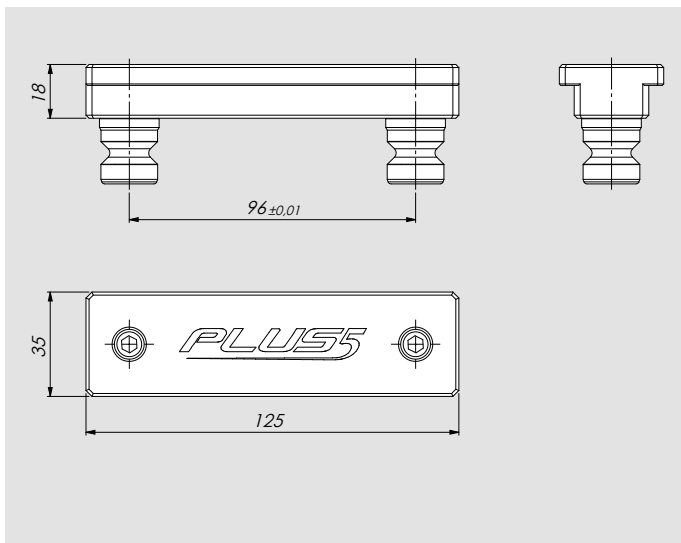
Tipo	Cod.	B	F	Peso	Peso (solo cubo)
Cubo Plus 5 - 96 - Base 400	46247210	400	80	253 Kg	253 Kg
Cubo Plus 5 - 96 - Base 500	46247220	500	100	280 Kg	280 Kg

Esempio di impiego



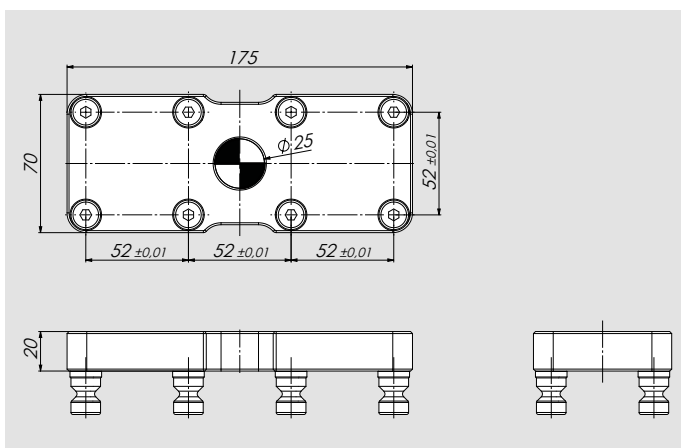
PLUS 5 - 96

Piastrina di sicurezza per bloccaggio su due moduli diversi. Completo di perni 96



PLUS 5 - 52

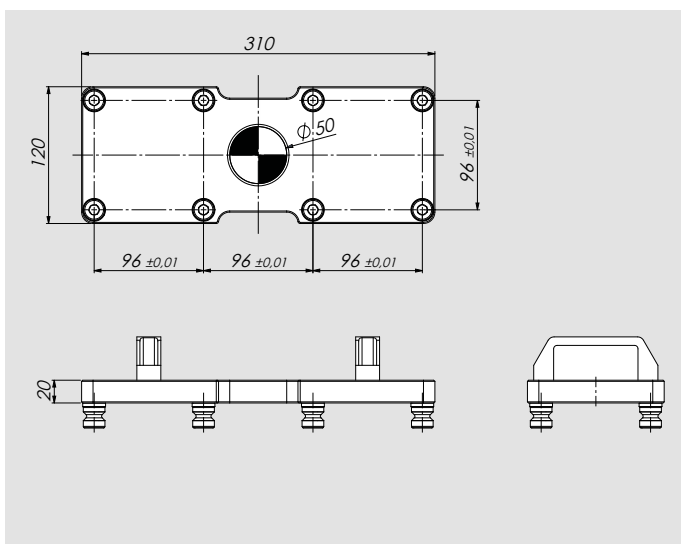
Piastra allineamento completa di perni 52



Cod.	Peso (Kg)
46240410	2

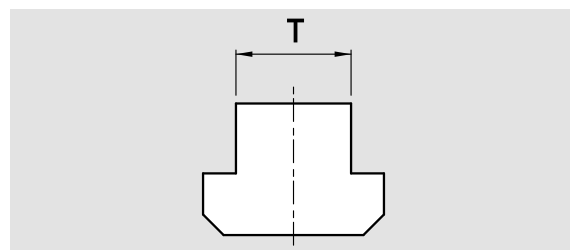
PLUS 5 - 96

Piastra allineamento completa di perni 96

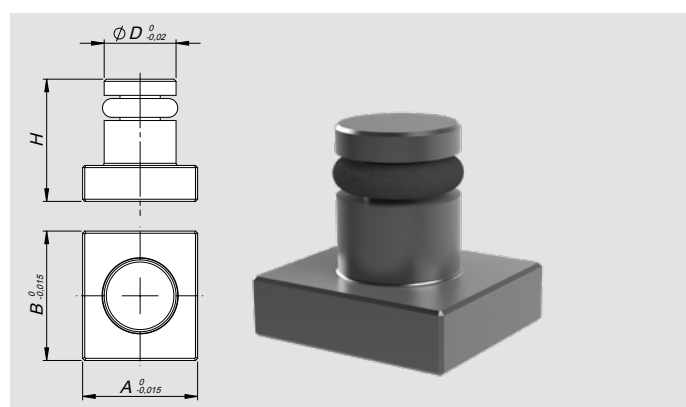


PLUS 5 - 52/96

Coppia Staffe Fissaggio



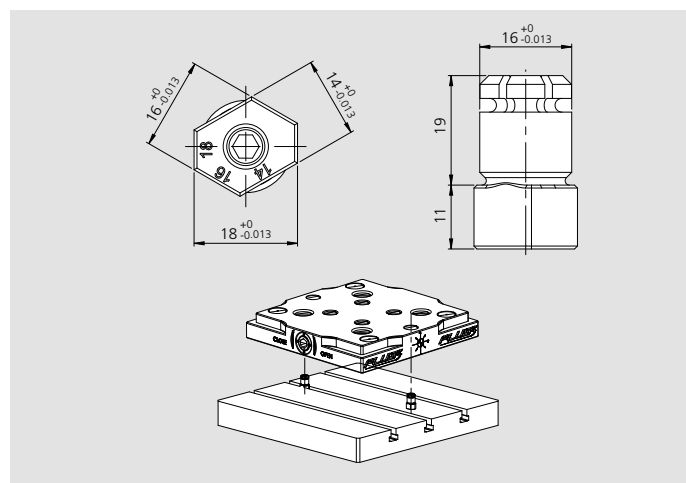
Tipo	mm 12	mm 14	mm 16	mm 18	mm 20	mm 22
PLUS 5 52/96	58022792	58022793	58022794	58022795	58022796	58022797



Chiavetta solo per

- Plus 5 52
- Plus 5 Index 96

Cod.	A	B	H	D
58341393	12	14	17	10
58341395	16	18	17	10



Chiavetta multi-slot per Plus 5 96

Tipo	Cod.
Multi-Slot 14 / 16 / 18	71290182



PLUS 5 - 52/96

Tappo di protezione in acciaio

Tipo	Cod.	Peso (Kg)
Set 4 tappi Plus 5 52	46240314	0,08
Set 4 tappi Plus 5 96	46240324	0,16
Tappo di protezione Plus 5 52	46240310	0,02
Tappo di protezione Plus 5 96	46240320	0,04

